

PANAMA CITY, FLORIDA

ILS or LOC Z RWY 14L

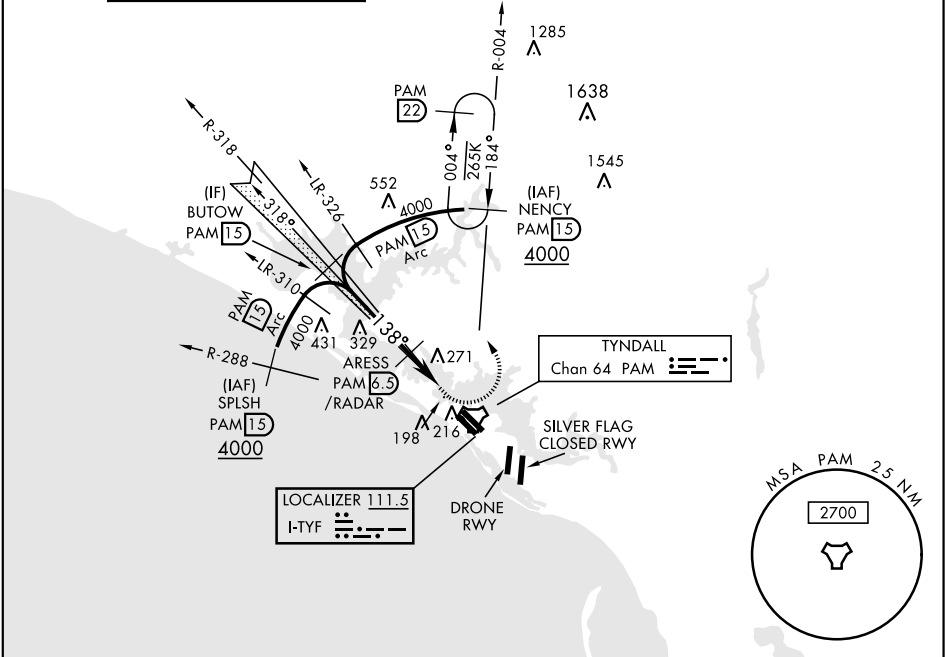
LOC I-TYF	APCH CRS	Rwy Idg
111.5	138°	10,008
		TDZE
		14
		Arpt Elev
		17

AL-312 [USAF]

TYNDALL AFB (KPAM)

DME or RADAR required.	ALSIF-1	MISSED APPROACH: Climbing left turn to 3000, intercept PAM TACAN R-004 to 15 DME (NENCY) and hold.
▼ * When ALS inop, increase RVR to 40 and vis to ¾ mile. ** When ALS inop, increase CAT AB RVR to 55, vis to 1 mile; CAT CDE vis to 1 ½ miles.	A1	

ATIS ★	TYNDALL APP CON	TYNDALL TOWER ★	GND CON	CLNC DEL	ASR/PAR
254.4	125.2 392.1 (N abv 5000') 120.825 379.3 (N blw 5000') 124.15 338.35 (S abv 5000') 119.775 317.45 (S blw 5000')	133.95 263.15	121.9 259.3	118.05 348.7	



EMERG SAFE ALT 100 NM 3300

CATEGORY	A	B	C	D	E
S-ILS 14L *	214/24		200	(200-½)	
S-LOC 14L **	420/40		406	(500-¾)	
CIRCLING	540-1 523 (600-1)	560-1½ 543 (600-1½)	580-2 563 (600-2)	620-2¼ 603 (700-2¼)	

ELEV 17	TDZE 14
95	138° 5.8 NM from FAF
A1	HIRL Rwy 14L-32R, 14R-32L Rwy 32L Idg 9135'
A76	10.113-150
A131	10.008-200
A122	
A173	
TWR 148	
A158	
A162	
A32L	
A32R	

Recommend Rwy 14L-32R for apch end engagement of A-Gear.					
FAF to MAP 5.3 NM					
Knots	60	90	120	150	180
Min:Sec	5:18	3:32	2:39	2:07	1:46

PANAMA CITY, FLORIDA

30°04'N-85°35'W

TYNDALL AFB (KPAM)

Amtd 3 08OCT20

ILS or LOC Z RWY 14L

SE-3, 03 DEC 2020 to 31 DEC 2020