

PANAMA CITY, FLORIDA

# RNAV (GPS) RWY 32L

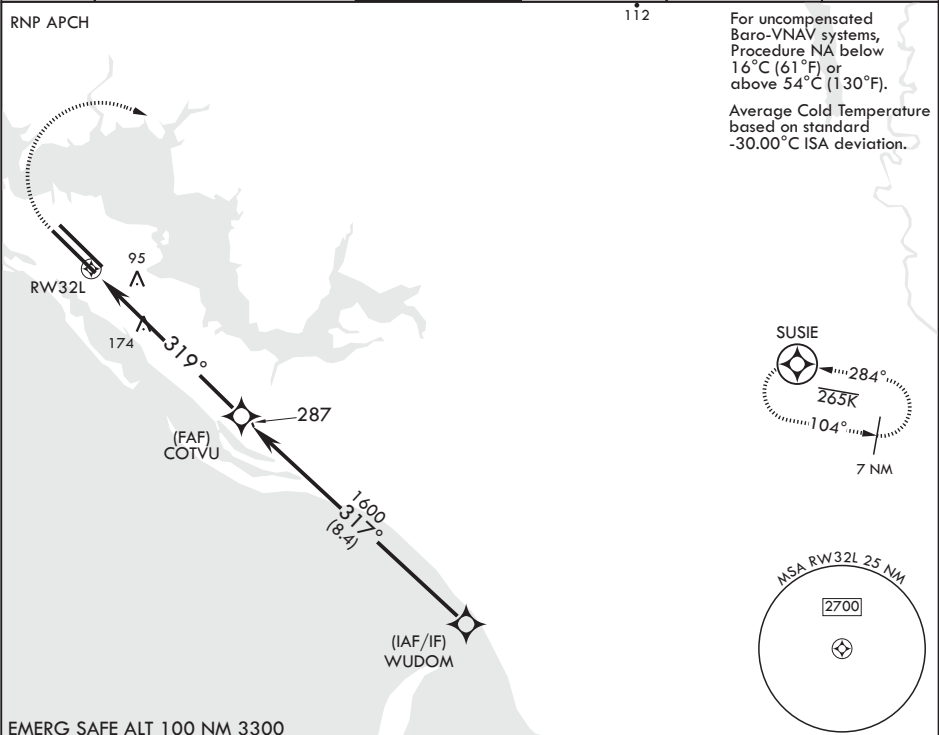
WAAS CH 71279 W32B	APCH CRS 319°	Rwy Idg TDZE Arpt Elev	9135 17 17
--------------------------	------------------	------------------------------	------------------

AL-312 (USAF)

TYNDALL AFB (KPAM)

		MISSED APPROACH: Climb to 600 then climbing right turn to 3000 direct SUSIE and hold.	
--	--	--	--

ATIS★ 254.4	APP CON/DEP CON 119.775 317.45 BLW 5000' 124.15 338.35 ABV 5000'	TOWER★ 133.95 263.15	GND CON 121.9 259.3	CLNC DEL 118.05 348.7	ASR/PAR
----------------	--	-------------------------	------------------------	--------------------------	---------



EMERG SAFE ALT 100 NM 3300

				VGSI and RNAV glidepath not coincident (VGSI angle 2.50/TCH 40).		WUDOM		ELEV 17		TDZE 17	
				*LNNAV only		COTVU		3000		Rwy 32L Idg 9135'	
RWY 32L		*1.5 NM to RWY 32L		319°		317°		1600		GP 2.50° TCH 45	
5.8 NM		5.8 NM		5.8 NM		5.8 NM		5.8 NM		5.8 NM	
CATEGORY	A	B	C	D	E						
LPV DA	217-3/4		200		(200-3/4)						
LNNAV/VNAV DA	383-1		366		(400-1)						
LNNAV MDA	460-1	443 (500-1)	460-1 3/8	443	(500-1 3/8)						
CIRCLING	540-1	523 (600-1)	560-1 1/2 543 (600-1 1/2)	580-2 563 (600-2)	620-2 1/4 603 (700-2 1/4)						

PANAMA CITY, FLORIDA

30°04'N - 85°34'W

TYNDALL AFB (KPAM)

Amndt 2 08OCT20

# RNAV (GPS) RWY 32L

SE-3, 03 DEC 2020 to 31 DEC 2020

SE-3, 03 DEC 2020 to 31 DEC 2020