

PANAMA CITY, FLORIDA

TACAN Z RWY 14L

TACAN PAM Chan <b>64</b>	APCH CRS <b>130°</b>	Rwy ldg <b>10,008</b> TDZE <b>14</b> Arpt Elev <b>17</b>
-----------------------------	-------------------------	--

AL-312 [USAF]

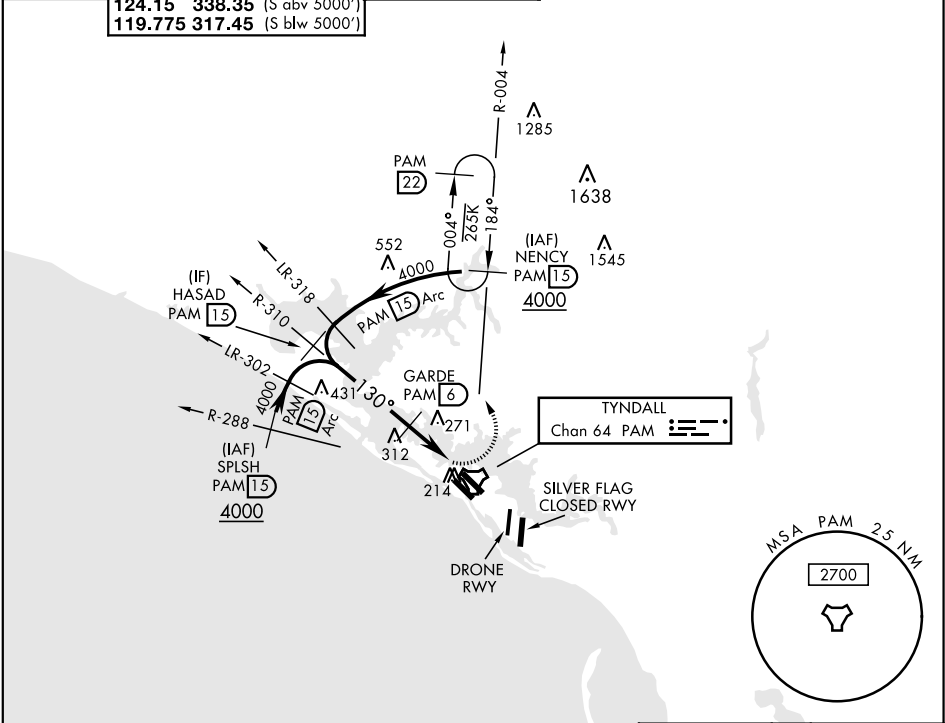
TYNDALL AFB (KPAM)

**▼** \* When ALS inop, increase CAT AB RVR to 55 and vis to 1 mile, CAT CDE vis to 1½ miles.

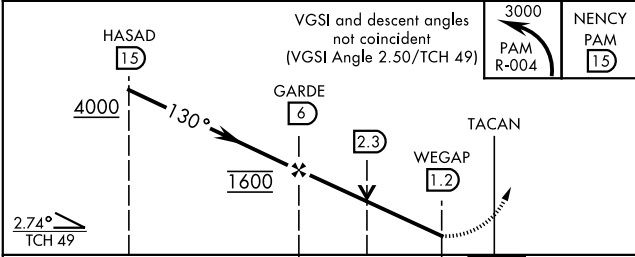
ALS-F-1

MISSED APPROACH: Climbing left turn to 3000, intercept PAM TACAN R-004 to 15 DME (NENCY) and hold.

ATIS ★ <b>254.4</b>	TYNDALL APP CON <b>125.2 392.1</b> (N abv 5000') <b>120.825 379.3</b> (N blw 5000') <b>124.15 338.35</b> (S abv 5000') <b>119.775 317.45</b> (S blw 5000')	TYNDALL TOWER ★ <b>133.95 263.15</b>	GND CON <b>121.9 259.3</b>	CLNC DEL <b>118.05 348.7</b>	ASR/PAR
------------------------	--	---	-------------------------------	---------------------------------	---------



EMERG SAFE ALT 100 NM 3300



CATEGORY	A	B	C	D	E
S-14L*	480/24 466 (500-½)		480/50 466 (500-1)		
CIRCLING	540-1 523 (600-1)		560-1½ 543 (600-1½)	580-2 563 (600-2)	620-2¼ 603 (700-2¼)

ELEV 17 TDZE 14

HIRL Rwy 14L-32R, 14R-32L  
Rwy 32L ldg 9135'

Recommend Rwy 14L-32R for apch and engagement of A-Gear.

PANAMA CITY, FLORIDA

30°04'N-85°35'W

TYNDALL AFB (KPAM)

Amtd 2 08OCT20

TACAN Z RWY 14L

SE-3, 03 DEC 2020 to 31 DEC 2020

SE-3, 03 DEC 2020 to 31 DEC 2020