

LOC/DME I-PNS	APP CRS	Rwy Idg	7004
111.1	169°	TDZE	121
Chan 48		Apt Elev	121

ILS or LOC RWY 17  
PENSACOLA INTL (PNS)

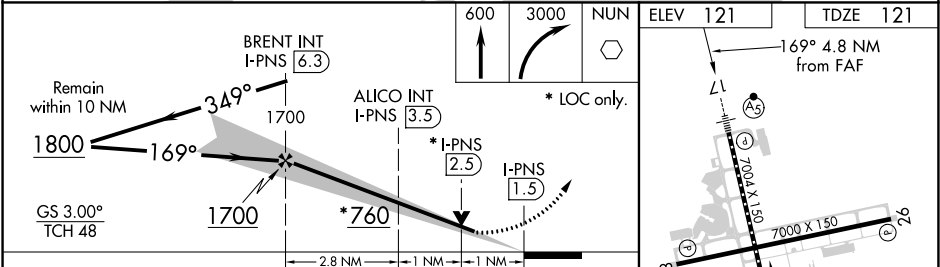
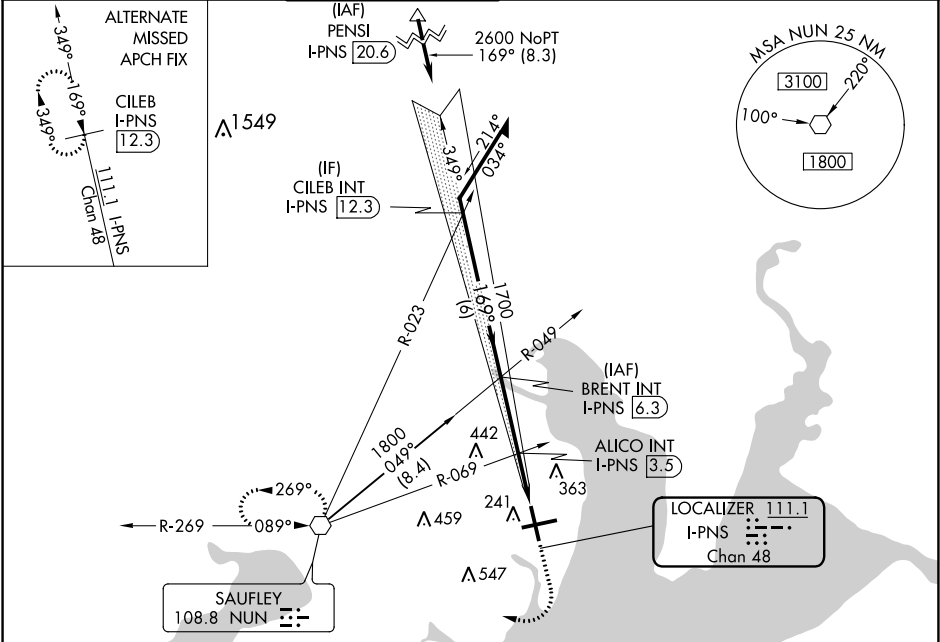
**⚠** For inop ALS, increase S-LOC 17 Cat C/D to 1 ¼ SM.  
**⚠** ALICO FIX MINIMUMS: For inop ALS, increase S-LOC 17 Cat C/D visibility to RVR 5500.  
CAUTION: Intensive VFR student training in vicinity of airport.

MALSR

AS

MISSED APPROACH: Climb to 600 then climbing right turn to 3000 direct NUN VOR and hold, continue climb-in-hold to 3000.

ATIS 121.25	PENSACOLA APP CON 119.0 269.375	PENSACOLA TOWER ★ 119.9 (CTAF) 0 257.8	GND CON 121.9 348.6	CLNC DEL 123.725 256.875	UNICOM 122.95
----------------	------------------------------------	---	------------------------	-----------------------------	------------------



CATEGORY	A	B	C	D
S-ILS 17		321/18	200 (200-½)	
S-LOC 17	760/24	639 (700-½)	760-1¾	639 (700-1¾)
CIRCLING	760-1	639 (700-1)	760-1¾	760-2
ALICO FIX MINIMUMS (DUAL VOR RECEIVERS OR DME REQUIRED)				
S-LOC 17	480/24	359 (400-½)	480/30	359 (400-¾)
CIRCLING	580-1	680-1	680-1½	720-2
	459 (500-1)	559 (600-1)	559 (600-½)	599 (600-2)

REIL Rwy 8, 26 and 35  
TDZ/CL Rwy 17  
HIRL Rwy 8-26 and 17-35

FAF to MAP 4.8 NM

Knots	60	90	120	150	180
Min:Sec	4:48	3:12	2:24	1:55	1:36