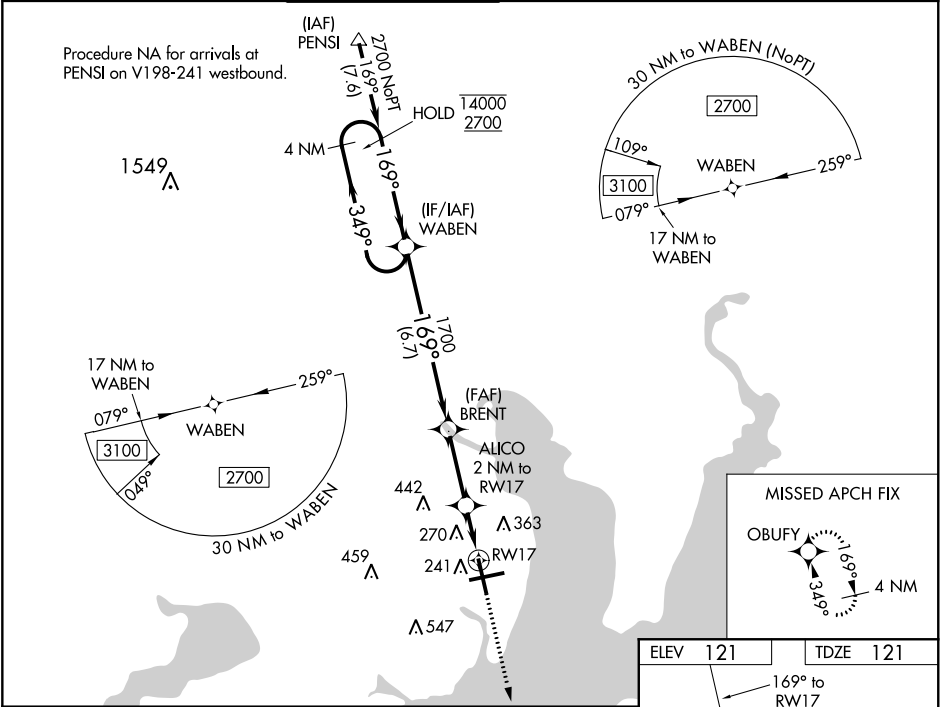


WAAS CH 97319 W17A	APP CRS 169°	Rwy Idg TDZE Apt Elev	7004 121 121
--	------------------------	-----------------------------	---

RNAV (GPS) RWY 17
PENSACOLA INTL (PNS)

RNP APCH.				MALSR		MISSED APPROACH: Climb to 2000 direct OBUFY and hold.	
▼ For uncompensated Baro-VNAV systems, LNAV/VNAV NA below 1°C or above 54°C. CAUTION: Intensive VFR student training in vicinity of airport.							
ATIS 121.25	PENSACOLA APP CON 119.0 269.375	PENSACOLA TOWER ★ 119.9 (CTAF) 0 257.8	GND CON 121.9 348.6	CLNC DEL 123.725 256.875		UNICOM 122.95	



4 NM Holding Pattern

WABEN

BRENT

ALICO 2 NM to RW17

2000

OBUFY

*LNAV only.

14000 ← 349°

2700 → 169°

169°

1700

*800

*1.1 NM to RW17

RW17

GP 3.00°

TCH 48

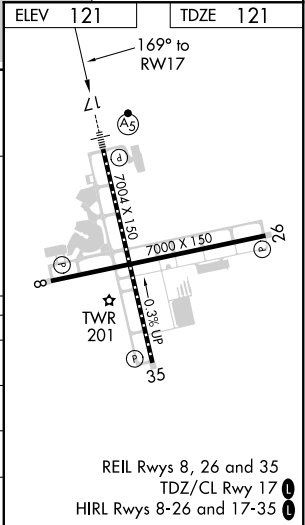
6.7 NM

2.8 NM

0.9 NM

1.1 NM

CATEGORY	A	B	C	D
LPV DA	321/18		200 (200-½)	
LNAV/VNAV DA	542/40		421 (500-¾)	
LNAV MDA	520/24	399 (400-½)	520/35	399 (400-¾)
CIRCLING	580-1 459 (500-1)	680-1 559 (600-1)	680-1½ 559 (600-1½)	680-2 559 (600-2)



SE-3, 03 DEC 2020 to 31 DEC 2020

SE-3, 03 DEC 2020 to 31 DEC 2020