

WAAS CH <b>40311</b> <b>W01A</b>	APP CRS <b>005°</b>	Rwy Idg TDZE <b>62</b> Apt Elev <b>62</b>
--	------------------------	---

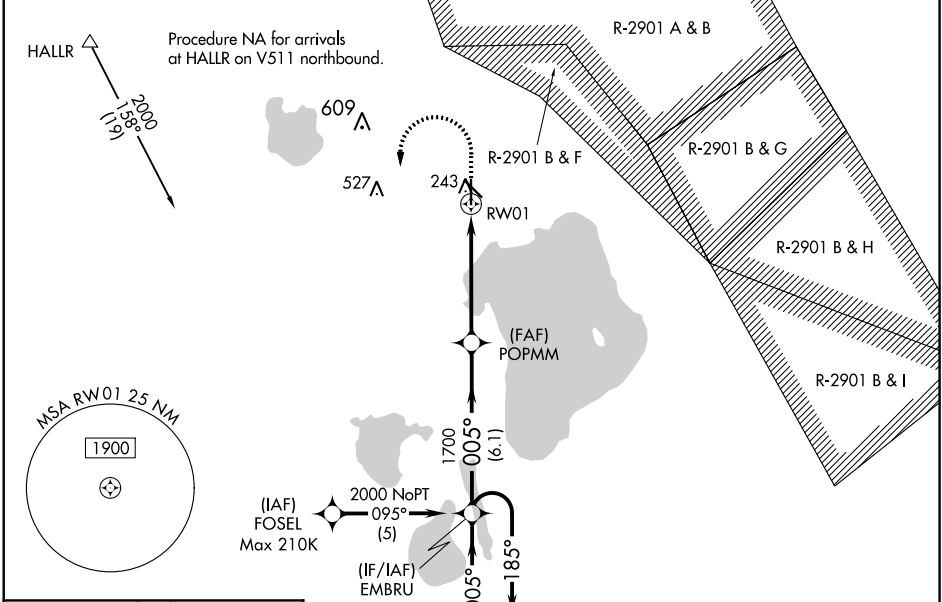
RNAV (GPS) RWY 1

SEBRING RGNL (SEF)

**⚠** For uncompensated Baro-VNAV systems, LNAV/VNAV NA below -15°C (5°F) or above 54°C (130°F). DME/DME RNP-0.3 NA. When local altimeter setting not received, use Vero Beach Rgnl altimeter setting and increase all DA 122 feet and all MDA 140 feet; increase LPV all Cats visibility ½ mile, LNAV/VNAV all Cats visibility and LNAV Cats C and D visibility ¾ mile, increase Circling Cat C visibility ½ mile and Cat D visibility ¼ mile. Night landing: Rwy 14, 32 NA, VDP and Baro-VNAV NA when using Vero Beach altimeter. Helicopter visibility reduction below ¾ SM NA.

**MISSED APPROACH:**  
Climb to 600 then climbing left turn to 2000 direct EMBRU and hold.

AWOS-3 <b>119.475</b>	MIAMI CENTER <b>134.55 257.7</b>	UNICOM <b>122.7 (CTAF) 0</b>
--------------------------	-------------------------------------	---------------------------------



ELEV 62

TDZE 62

MIRL Rwy 1-19

REIL Rwy 1 and 19

<div>Procedure NA for arrivals on LBV VORTAC airway radials 312 CW 093.</div>				
<div><div><div><div><div>600</div><div>↑</div></div><div>2000</div><div>EMBRU</div></div><div><div><div>IAF</div><div>LA BELLE LBV</div></div><div><div>4 NM</div><div>2000 NoPT</div><div>011° [26.2]</div></div></div></div><div><div>POPMM</div><div>1700</div><div>EMBRU</div><div>4 NM Holding Pattern</div><div>185° →</div><div>← 005°</div><div>2000</div><div>GP 3.00°</div><div>TCH 58</div></div><div><div>*RNAV only.</div><div>*1.4 NM to RW01</div><div>RW01</div><div>1.4</div><div>3.6 NM</div><div>6.1 NM</div></div></div>				
CATEGORY	A	B	C	D
LPV DA	381-1 319 (400-1)			
LNAV/VNAV DA	408-1½ 346 (400-1½)			
LNAV MDA	540-1 478 (500-1)		540-1¾ 478 (500-1¾)	
CIRCLING	600-1 538 (600-1)		600-1½ 538 (600-1½)	620-2 558 (600-2)