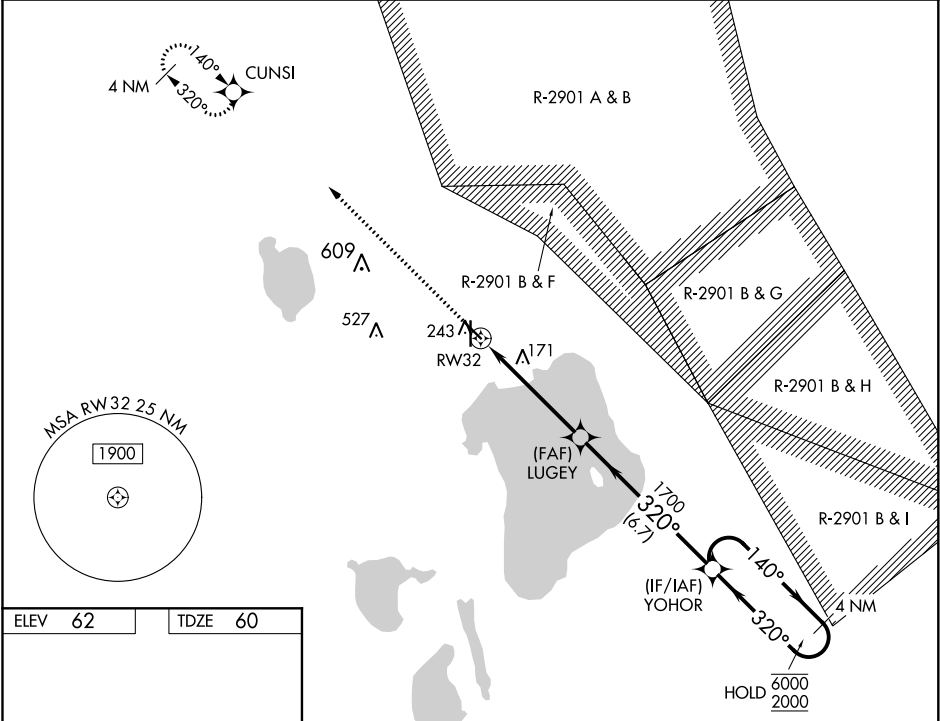


WAAS CH 48925 W32A	APP CRS 320°	Rwy Idg TDZE Apt Elev	4990 60 62
--	------------------------	-----------------------------	---------------------------------------

RNAV (GPS) RWY 32
SEBRING RGNL (SEF)

RNP APCH.	MISSED APPROACH: Climb to 2000 direct CUNSI and hold.
Circling Rwy 14 NA at night.	

AWOS-3 119.475	MIAMI CENTER 134.55 257.7	UNICOM 122.7 (CTAF) 0
--------------------------	-------------------------------------	---------------------------------



ELEV 62	TDZE 60
---------	---------

Diagram illustrating the 4 NM Holding Pattern at YOHO. The pattern is a series of turns: 140° to 6000 and 320° to 2000. The diagram shows the pattern's geometry, including the 1 NM to RW32 distance and the 3.00° TCH 40. The diagram also shows the 1 NM to RW32 distance and the 3.00° TCH 40. The diagram also shows the 1 NM to RW32 distance and the 3.00° TCH 40.

MIRL Rwy 1-19 **1**
REIL Rws 1 and 19 **1**

2000 CUNSI		YOHO 4 NM Holding Pattern			
CATEGORY		A	B	C	D
LP MDA		420-1 360 (400-1)			
LNAV MDA		480-1 420 (500-1)		480-1½ 420 (500-1½)	
C CIRCLING		600-1 538 (600-1)		600-1½ 538 (600-1½)	880-2¾ 818 (900-2¾)

SE-3, 03 DEC 2020 to 31 DEC 2020

SE-3, 03 DEC 2020 to 31 DEC 2020