


WAAS CH <b>40406</b> <b>W19B</b>	APP CRS <b>187°</b>	Rwy Idg <b>11002</b> TDZE <b>21</b> Apt Elev <b>26</b>
--	------------------------	--

RNAV (GPS) RWY 19R  
TAMPA INTL (TPA)

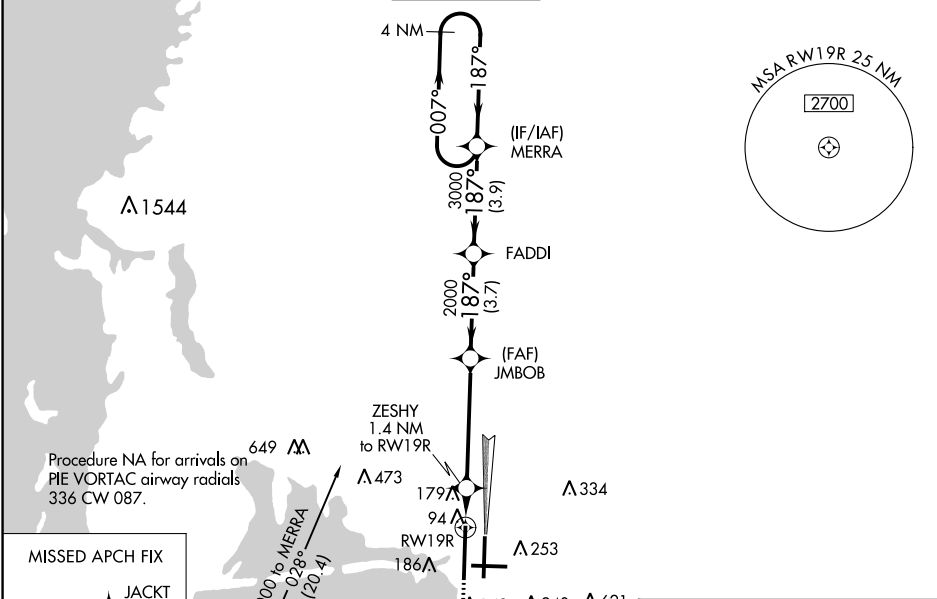
**⚠** For uncompensated Baro-VNAV systems, LNAV/VNAV NA below -15°C (5°F) or above 43°C (109°F). DME/DME RNP-0.3 NA. For inop MALSR, increase LPV Cat E visibility to ¾ mile, LNAV/VNAV Cat E visibility to 1½ mile, and LNAV Cat E visibility to 1½. Simultaneous approach authorized with Rwy 19L. LNAV procedure NA during simultaneous operations. Use of FD or AP providing RNAV track guidance required during simultaneous operations. \*\*RVR 1800 authorized with use of FD or AP or HUD to DA.

MALSR




MISSED APPROACH: Climb to 800 then climbing right turn to 3000 direct JACKT and hold, continue climb-in-hold to 3000.

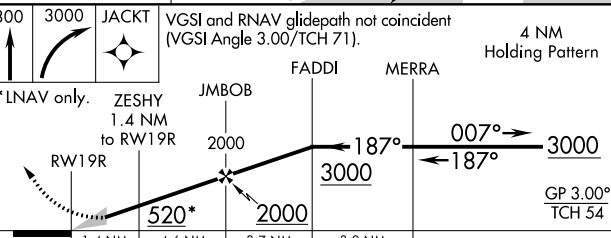
ARR <b>126.45</b>	D-ATIS	DEP <b>128.475</b>	TAMPA APP CON <b>118.5 307.175</b>	TAMPA TOWER <b>119.5 269.4</b>	GND CON <b>121.7 269.4</b>	CLNC DEL <b>133.6</b>	CPDLC
----------------------	--------	-----------------------	---------------------------------------	-----------------------------------	-------------------------------	--------------------------	-------



**MISSED APCH FIX**

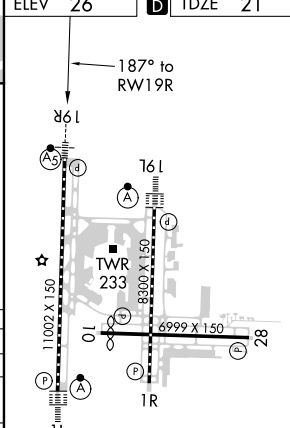


**VGSI and RNAV glidepath not coincident (VGSI Angle 3.00/TCH 71).**



CATEGORY	A	B	C	D	E
LPV DA**	221/24 200 (200-½)				
LNAV/VNAV DA	466/50 445 (500-1)				
LNAV MDA	440/24 419 (500-½)		440/40 419 (500-¾)		
<b>C</b> CIRCLING	560-1 534 (600-1)		680-1¾ 654 (700-1¾) 980-3 954 (1000-3)		

**ELEV 26 TDZE 21**



REIL Rwy 1R  
TDZ/CL Rwys 1L and 19L  
HIRL Rwys 1L-19R, 1R-19L, and 10-28

SE-3, 03 DEC 2020 to 31 DEC 2020

SE-3, 03 DEC 2020 to 31 DEC 2020