

WAAS CH <b>50406</b> <b>W01A</b>	APP CRS <b>007°</b>	Rwy Idg <b>10800</b> TDZE <b>11</b> Apt Elev <b>26</b>
--	------------------------	--

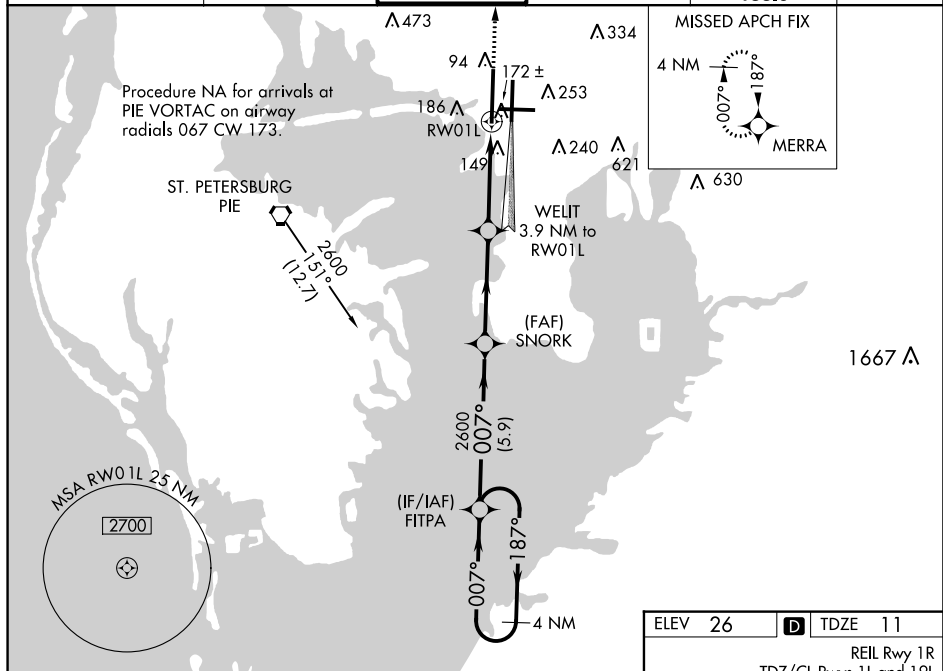
RNAV (GPS) RWY 1L  
TAMPA INTL (TPA)

**T** For uncompensated Baro-VNAV systems, LNAV/VNAV NA below -15°C (5°F) or above 43°C (109°F). DME/DME RNP-0.3 NA. For inop ALSF, increase LPV Cat E visibility to RVR 4000. LNAV/VNAV Cat E visibility to 1½ mile, and LNAV Cat E visibility to RVR 6000. Simultaneous approach authorized with Rwy 1R. LNAV procedure NA during simultaneous operations. Use of FD or AP providing RNAV track guidance required during simultaneous operations.

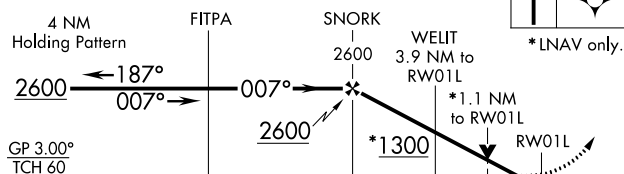
ALSF-2



ARR	D-ATIS	DEP	TAMPA APP CON	TAMPA TOWER	GND CON	CLNC DEL	CPDLC
126.45	128.475	118.5	307.175	119.5 269.4	121.7 269.4	133.6	



VGSI and RNAV glidepath not coincident (VGSI Angle 3.00/TCH 71).



		5.9 NM		4 NM		2.8		1.1 NM			
CATEGORY	A	B		C		D		E			
LPV DA	211/18 200 (200-½)										
RNAV/ VNAV DA	431/45 420 (500-¾)										
RNAV MDA	440/24	429 (500-½)		440/40		429 (500-¾)					
<b>C</b> CIRCLING	560-1	534 (600-1)		680-1 <sup>3</sup> / <sub>4</sub> 654 (700-1 <sup>3</sup> / <sub>4</sub> )		980-3 954 (1000-3)					

