

TAMPA, FLORIDA

AL-417 (FAA)

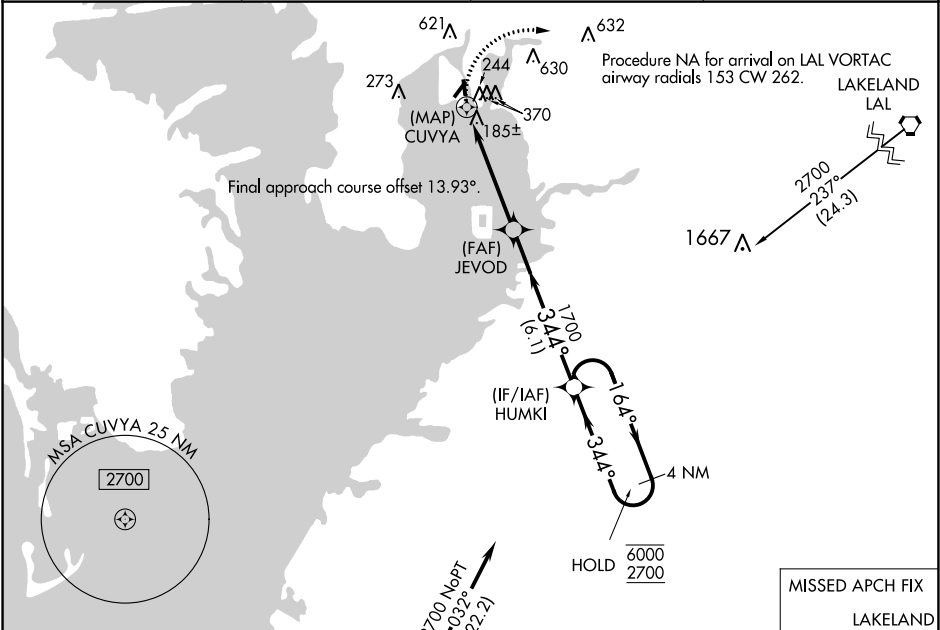
20310

WAAS CH <b>63220</b> <b>W36A</b>	APP CRS <b>344°</b>	Rwy Idg <b>2311</b> TDZE <b>7</b> Apt Elev <b>7</b>
--	------------------------	---

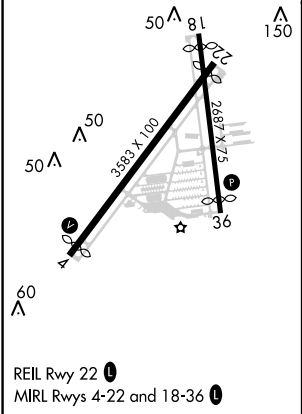
RNAV (GPS) RWY 36  
PETER O KNIGHT (TPF)



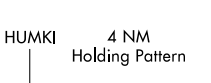

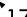
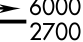

RNP APCH. ⚠ Circling NA northwest of Rwy 4-22. Procedure NA at night. Rwy 36 helicopter visibility reduction below 1 SM NA. When local altimeter setting not received, use Tampa Intl altimeter setting and increase all MDA 20 feet. Circling NA to Rwy 18.	MISSED APPROACH: Climbing right turn to 2700 direct LAL VORTAC and hold.
---	--

AWOS-3 <b>118.925</b>	TAMPA APP CON <b>119.9 290.3</b>	CLNC DEL <b>119.8</b>	UNICOM <b>122.725 (CTAF) 0</b>
--------------------------	-------------------------------------	--------------------------	-----------------------------------



ELEV 7	D	TDZE 7
--------	---	--------



					
					
CUVYA		JEVOD		164° ←344°	
		1700		6000 2700	
0.5		4.7 NM		6.1 NM	
CATEGORY	A	B	C	D	
LP MDA	440-1	433 (500-1)	NA		
LNAV MDA	500-1	493 (500-1)	NA		
 CIRCLING	720-1	713 (800-1)	NA		

TAMPA, FLORIDA  
Amdt 2E 26MAR20

27°55'N-82°27'W

PETER O KNIGHT (TPF)  
RNAV (GPS) RWY 36

SE-3, 03 DEC 2020 to 31 DEC 2020

SE-3, 03 DEC 2020 to 31 DEC 2020