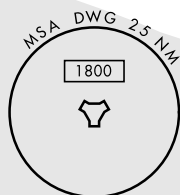
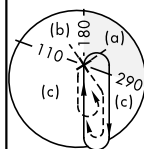
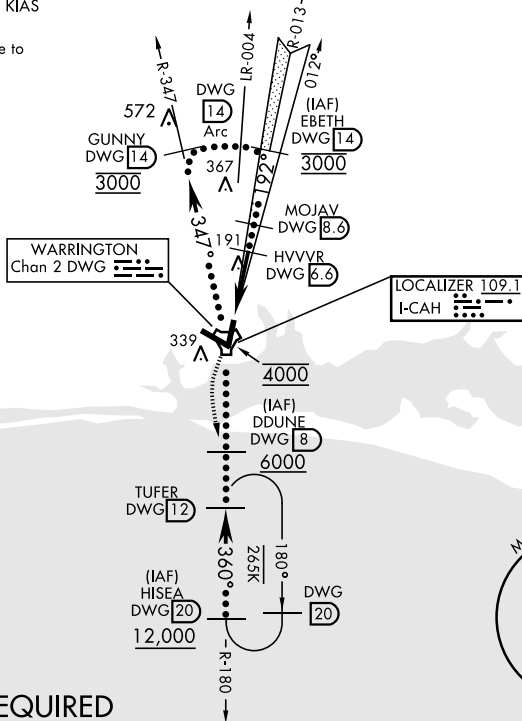


HI-ILS or LOC RWY 19

LOC I-CAH 109.1	APCH CRS 192°	Rwy Idg 10,001 THRE 60 Arprt Elev 84	JAL-436 [USAF]	EGLIN AFB/DESTIN-FT WALTON BEACH(KVPS)
* When ALS inop, increase CAT CDE RVR to 40 and vis to ¾ mile. ** When ALS inop, increase CAT CD RVR to 60 and vis to 1 ½ miles. CAT E vis to 1 ½ miles.			ALSF-1 	MISSED APPROACH: Climb to 2200 on the DWG R-180 to TUFER/12 DME and hold.
ATIS * 134.625 273.5	EGLIN APP CON 125.1 281.45 271° - 089° 132.1 360.6 090° - 270°	EGLIN TOWER 118.2 353.65	GND CON 121.8 335.8	CLNC DEL 127.7 377.2

Aircraft holding in excess of 230 KIAS require RADAR monitoring.

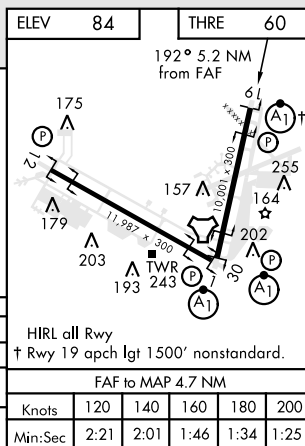
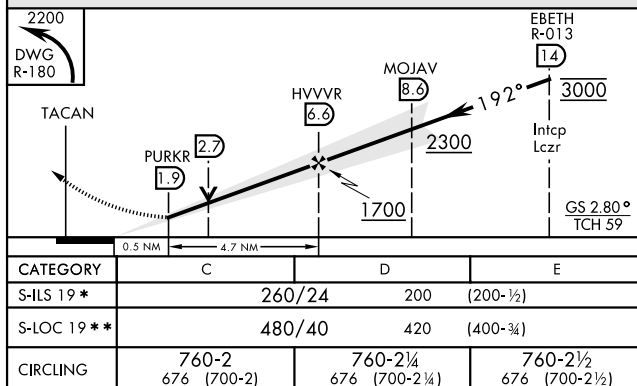
Procedure not usable at times due to restricted area activity.



DME or RADAR REQUIRED

(For Localizer approach)

EMERG SAFE ALT 100 NM 3600



HI-ILS or LOC RWY 19