

## ILS Y or LOC Y RWY 30

LOC I-VPS <b>109.1</b> Chan <b>28</b>	APCH CRS <b>300°</b>	Rwy Idg <b>11,987</b> THRE <b>49</b> Arpt Elev <b>84</b>
---	-------------------------	--

AL-436 [USAF] EGLIN AFB/DESTIN-FT WALTON BEACH (KVPS)



† MISSED APPROACH: Climb straight ahead to 600, then climbing right turn to 3000, intercept CEW VORTAC R-170 to CEW and hold.

\* When ALS inop, increase RVR to 40, vis to  $\frac{3}{4}$  mile.  
\*\* When ALS inop, increase RVR to 55, vis to 1 mile.

ATIS ★	EGLN APP CON		EGLN TOWER		GND CON	CLNC DEL
134.625 273.5	125.1 281.45	271° - 089°	118.2 353.65		121.8 335.8	127.7 377.2
	132.1 360.6	090° - 270°				

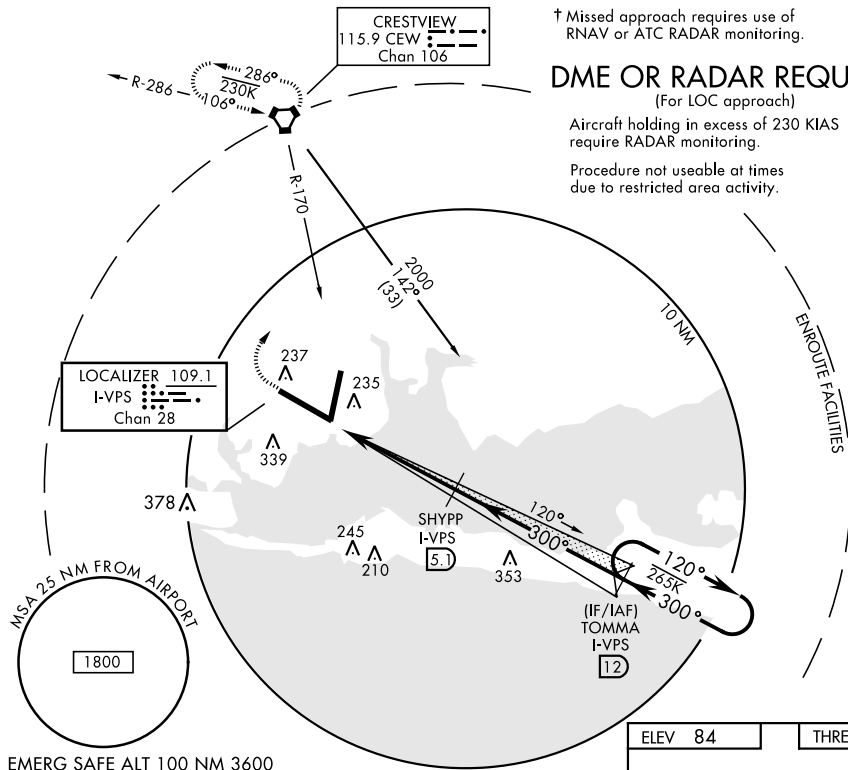
† Missed approach requires use of RNAV or ATC RADAR monitoring.

## DME OR RADAR REQUIRED

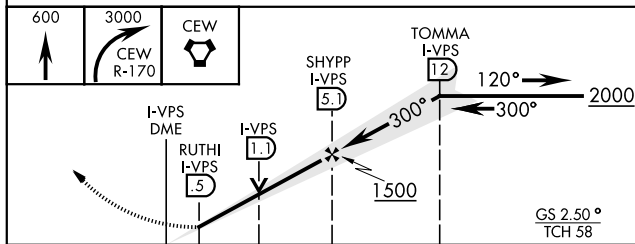
(For LOC approach)

Aircraft holding in excess of 230 KIAS require RADAR monitoring.

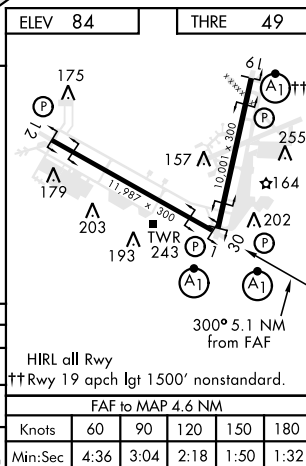
Procedure not useable at times  
due to restricted area activity.



EMERG SAFE ALT 100 NM 3600



CATEGORY	A	B	C	D	E
S-ILS 30*	249/24		200	(200-½)	
S-LOC 30**	420/24	371 (400-½)	420/35		371 (400-⅝)
CIRCLING	660-1	576 (600-1)	760-2 676 (700-2)	760-2¼ 676 (700-2¼)	760-2½ 676 (700-2½)



VALPARAISO, FLORIDA

Orig 26MAY16

30°29'N-86°32'W

EGLIN AFB/DESTIN-FT WALTON BEACH (KVPS)

## ILS Y or LOC Y RWY 30

SE-3, 03 DEC 2020 to 31 DEC 2020

SE-3, 03 DEC 2020 to 31 DEC 2020