

VALPARAISO, FLORIDA

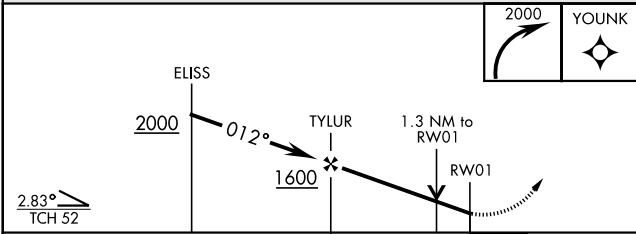
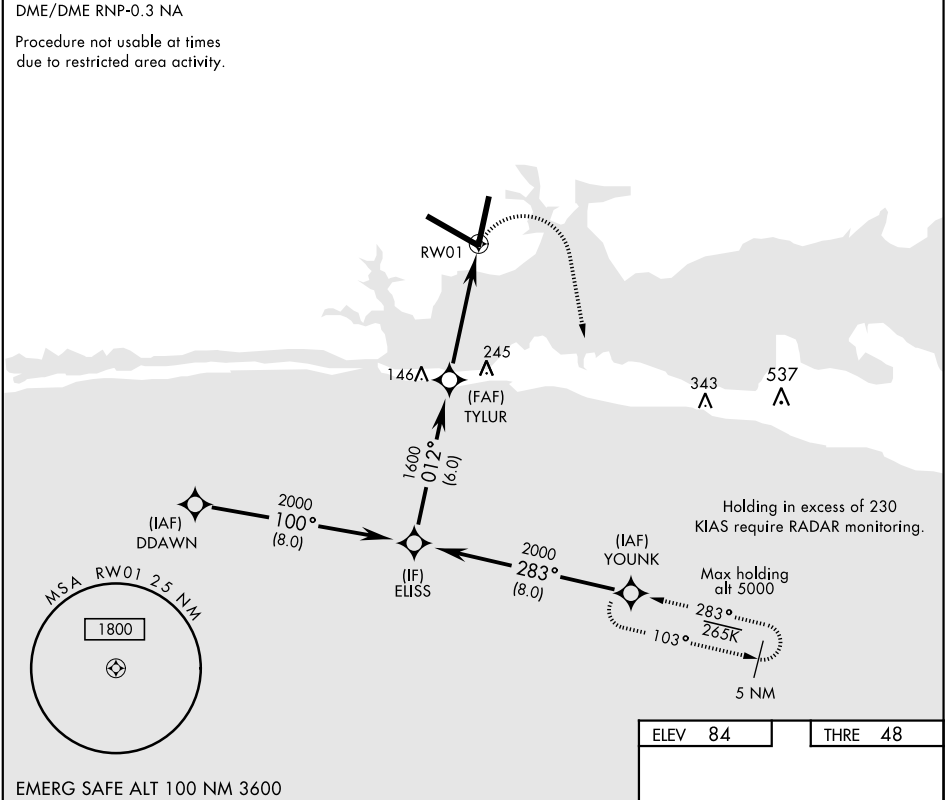
RNAV (GPS) RWY 1

APCH CRS	Rwy ldg	10,001
012°	THRE	48
	Arpt Elev	84

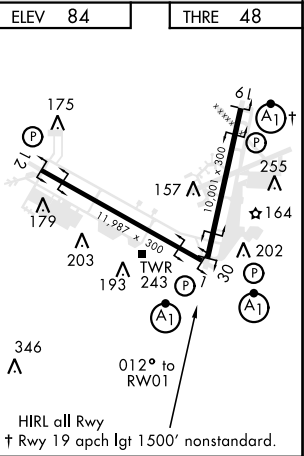
AL-436 [USAF] EGLIN AFB/DESTIN-FT WALTON BEACH (KVPS)

* When ALS inop, increase CAT AB RVR to 55 and vis to 1 mile, CAT CDE vis to 1½ miles.	ALSF-1 	MISSED APPROACH: Climbing right turn to 2000 to YOUNK and hold.
--	------------	---

ATIS ★	EGLIN APP CON	EGLIN TOWER	GND CON	CLNC DEL
134.625 273.5	125.1 281.45 271°-089° 132.1 360.6 090°-270°	118.2 353.65	121.8 335.8	127.7 377.2



CATEGORY	A	B	C	D	E
LNAV MDA ★	500/24	452 (500-½)	500/45	452	(500-¾)
CIRCLING	600-1	516 (600-1)	760-2 676 (700-2)	760-2¼ 676 (700-2¼)	760-2½ 676 (700-2½)



VALPARAISO, FLORIDA

Amdt 1 30MAY13

30°29'N-86°32'W

EGLIN AFB/DESTIN-FT WALTON BEACH (KVPS)

RNAV (GPS) RWY 1

SE-3, 03 DEC 2020 to 31 DEC 2020

SE-3, 03 DEC 2020 to 31 DEC 2020