


VALPARAISO, FLORIDA

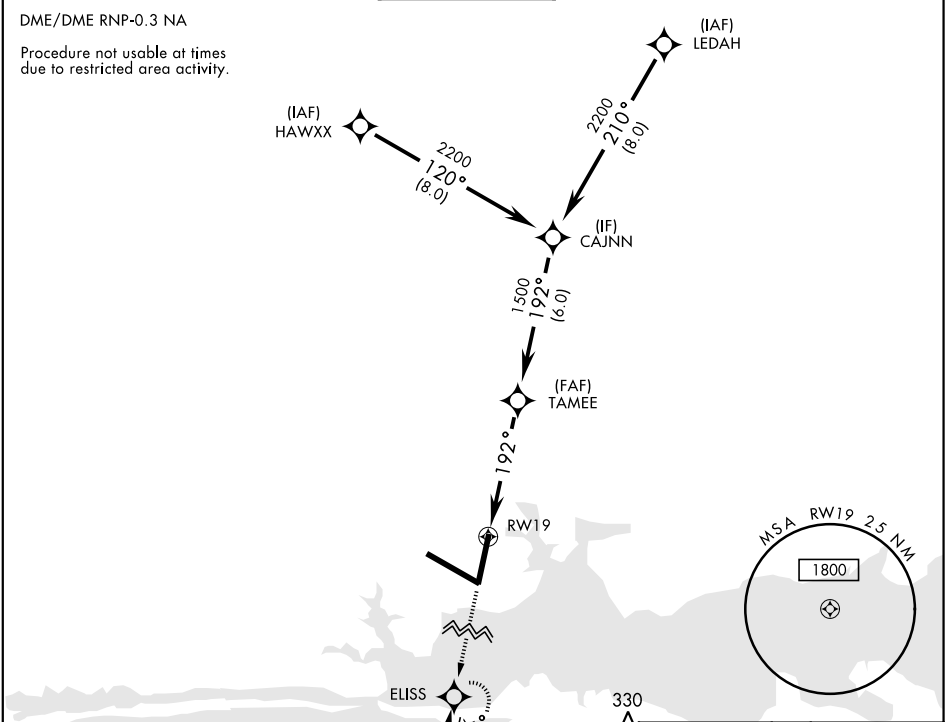
RNAV (GPS) RWY 19

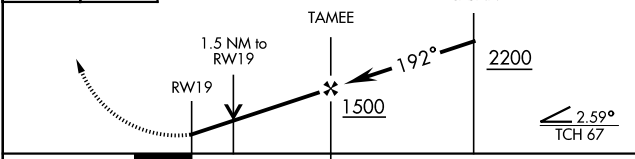
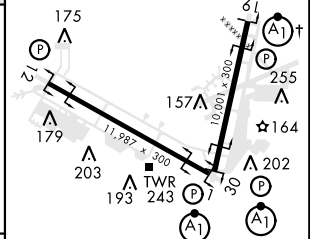
APCH CRS	Rwy ldg	10,001
192°	THRE	60
	Arpt Elev	84

AL-436 [USAF] EGLIN AFB/DESTIN-FT WALTON BEACH (KVPS)

* When ALS inop, increase CAT AB RVR to 55 and vis to 1 mile, CAT CDE vis to 1½ miles.	ALSF-1 	MISSED APPROACH: Climb straight ahead to 2000 to ELISS and hold.
--	---	--

ATIS ★ 134.625 273.5	EGLIN APP CON 125.1 281.45 271°-089° 132.1 360.6 090°-270°	EGLIN TOWER 118.2 353.65	GND CON 121.8 335.8	CLNC DEL 127.7 377.2
-------------------------	--	-----------------------------	------------------------	-------------------------



EMERG SAFE ALT 100 NM 3600						ELEV 84		THRE 60							
2000		ELISS													
CATEGORY						A		B		C		D		E	
LNAV MDA *						540/24		480 (500-½)		540/50		480		(500-1)	
CIRCLING						600-1		516 (600-1)		760-2 676 (700-2)		760-2¼ 676 (700-2¼)		760-2½ 676 (700-2½)	
															
						HIRL all Rwy † Rwy 19 apch lgt 1500' nonstandard.									

VALPARAISO, FLORIDA

30°29'N-86°32'W

EGLIN AFB/DESTIN-FT WALTON BEACH (KVPS)

Amdt 1 30MAY13

RNAV (GPS) RWY 19

SE-3, 03 DEC 2020 to 31 DEC 2020

SE-3, 03 DEC 2020 to 31 DEC 2020