

VALPARAISO, FLORIDA

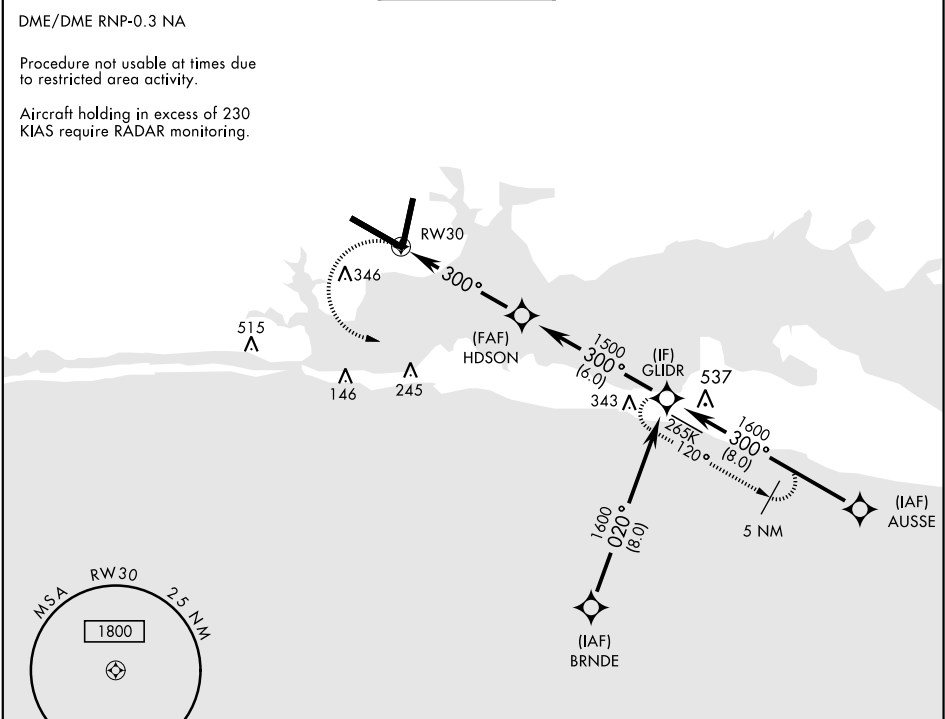
RNAV (GPS) RWY 30

APCH CRS	Rwy ldg	11,987
300°	THRE	49
	Arpt Elev	84

AL-436 [USAF] EGLIN AFB/DESTIN-FT WALTON BEACH(KVPS)

* When ALS inop, increase CAT AB RVR to 55 and vis to 1 mile, CAT CDE vis to 1½ miles.	ALSF-1 	MISSED APPROACH: Climbing left turn to 2000 to GLIDR and hold.
--	------------	--

ATIS ★ 134.625 273.5	EGLIN APP CON 125.1 281.45 271°-089° 132.1 360.6 090°-270°	EGLIN TOWER 118.2 353.65	GND CON 121.8 335.8	CLNC DEL 127.7 377.2
-------------------------	--	-----------------------------	------------------------	-------------------------



EMERG SAFE ALT 100 NM 3600					
CATEGORY	A	B	C	D	E
LNAV MDA *	500/24	451 (500-½)	500/45	451 (500-¾)	
CIRCLING	600-1	516 (600-1)	760-2 676 (700-2)	760-2¼ 676 (700-2¼)	760-2½ 676 (700-2½)
HIRL all Rwy					
† Rwy 19 apch lgt 1500' nonstandard.					

VALPARAISO, FLORIDA

Amdt 1 30MAY13

30°29'N-86°32'W

EGLIN AFB/DESTIN-FT WALTON BEACH(KVPS)

RNAV (GPS) RWY 30

SE-3, 03 DEC 2020 to 31 DEC 2020

SE-3, 03 DEC 2020 to 31 DEC 2020