

VALPARAISO, FLORIDA

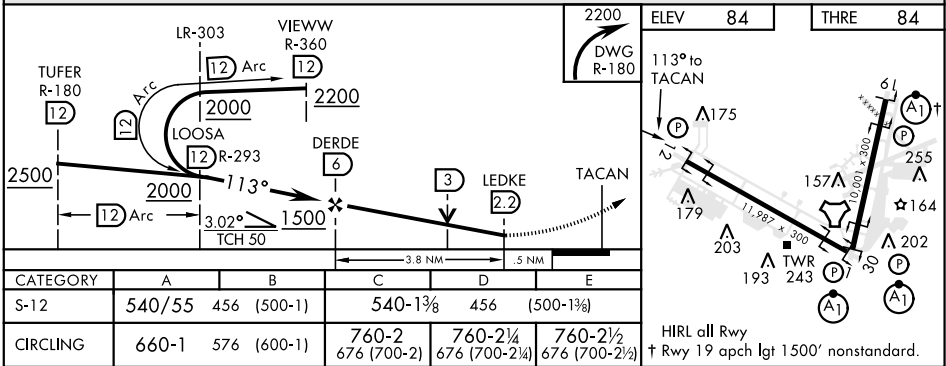
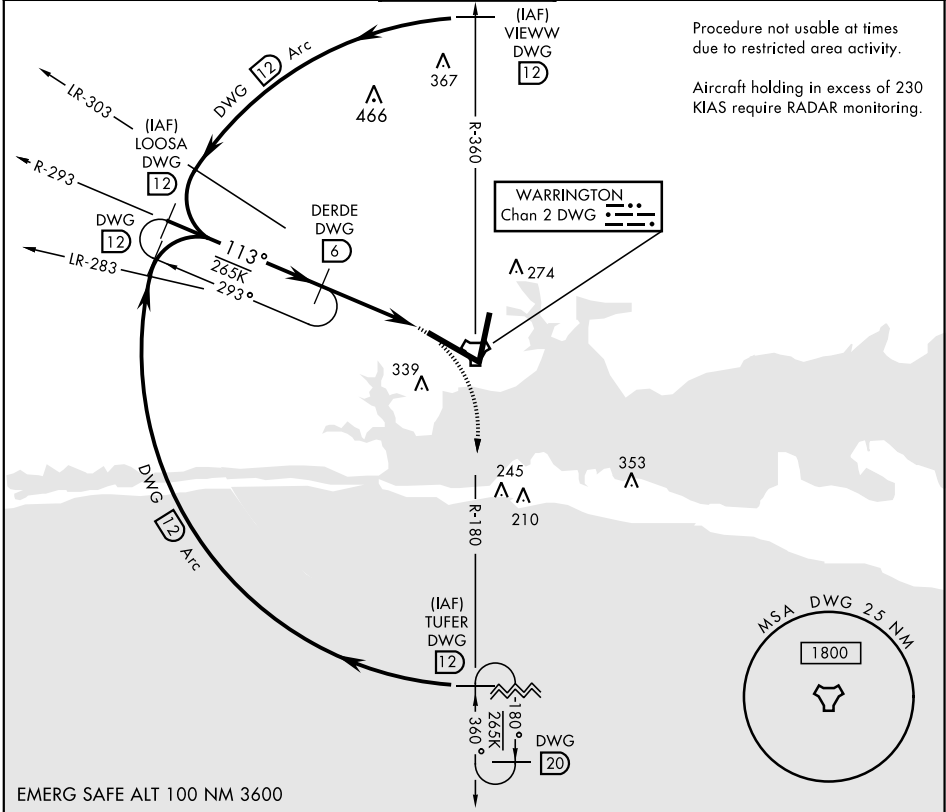
# TACAN RWY 12

TACAN DWG Chan 2	APCH CRS 113°	Rwy Ldg THRE 84 Arpt Elev 84
---------------------	------------------	------------------------------------

AL-436 [USAF] EGLIN AFB/DESTIN-FT WALTON BEACH (KVPS)

MISSED APPROACH: Climbing right turn to 2200 on DWG R-180/12 DME (TUFR) and hold.

ATIS ★ 134.625 273.5	EGLIN APP CON 125.1 281.45 271°- 089° 132.1 360.6 090°- 270°	EGLIN TOWER 118.2 353.65	GND CON 121.8 335.8	CLNC DEL 127.7 377.2
-------------------------	--	-----------------------------	------------------------	-------------------------



VALPARAISO, FLORIDA

Am d1 04APR13

30°29'N-86°32'W

EGLIN AFB/DESTIN-FT WALTON BEACH (KVPS)

# TACAN RWY 12

SE-3, 03 DEC 2020 to 31 DEC 2020

SE-3, 03 DEC 2020 to 31 DEC 2020