

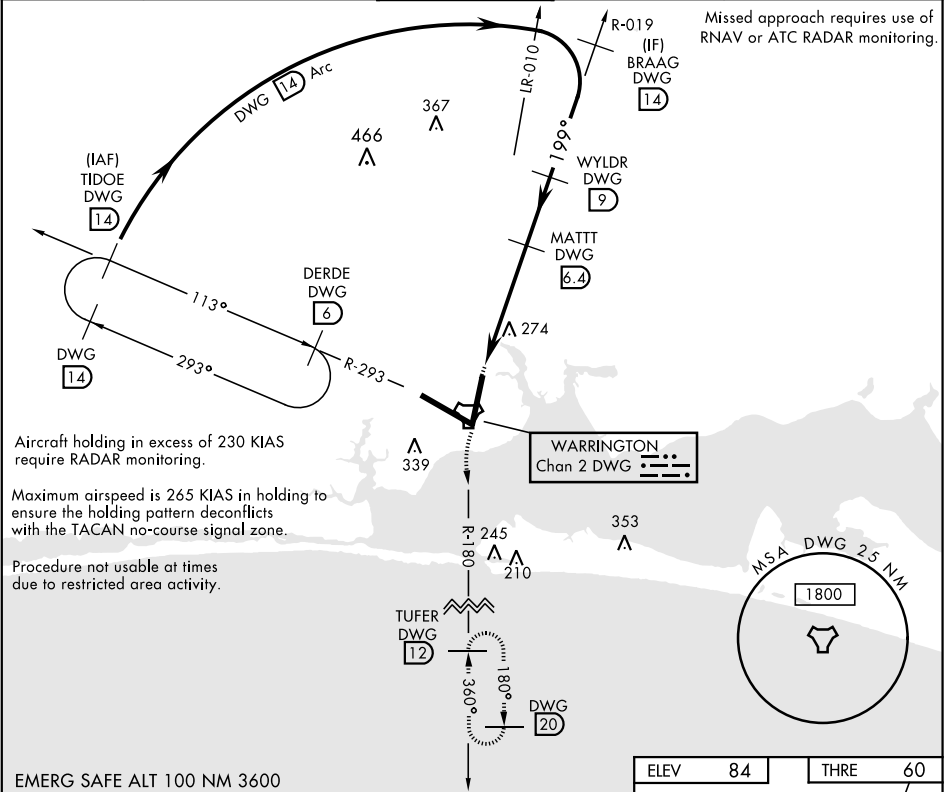
TACAN RWY 19

TACAN	DWG	APCH CRS	Rwy Idg
Chan	2	199°	10,001
		THRE	60
		Arpt Elev	84

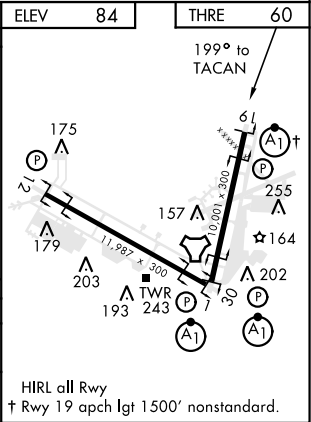
AL-436 [USAF] EGLIN AFB/DESTIN-FT WALTON BEACH (KVPS)

* When ALS inop, increase CAT AB RVR to 55 and vis to 1 mile, CAT CDE vis to 1 3/8 miles.		ALS F-1 A1	MISSED APPROACH: Climbing left turn to 2200 TUFER DWG TACAN R-180/12 DME and hold.
---	--	---------------	--

ATIS *	EGLIN APP CON	EGLIN TOWER	GND CON	CLNC DEL
134.625 273.5	125.1 281.45 271°- 089° 132.1 360.6 090°- 270°	118.2 353.65	121.8 335.8	127.7 377.2



CATEGORY	A		B	C	D	E
S-19 *	540/24 480 (500-½)		540/50 480 (500-1)			
CIRCLING	660-1 576 (600-1)		760-2 676 (700-2)	760-2¼ 676 (700-2¼)	760-2½ 676 (700-2½)	



TACAN RWY 19

SE-3, 03 DEC 2020 to 31 DEC 2020

SE-3, 03 DEC 2020 to 31 DEC 2020