

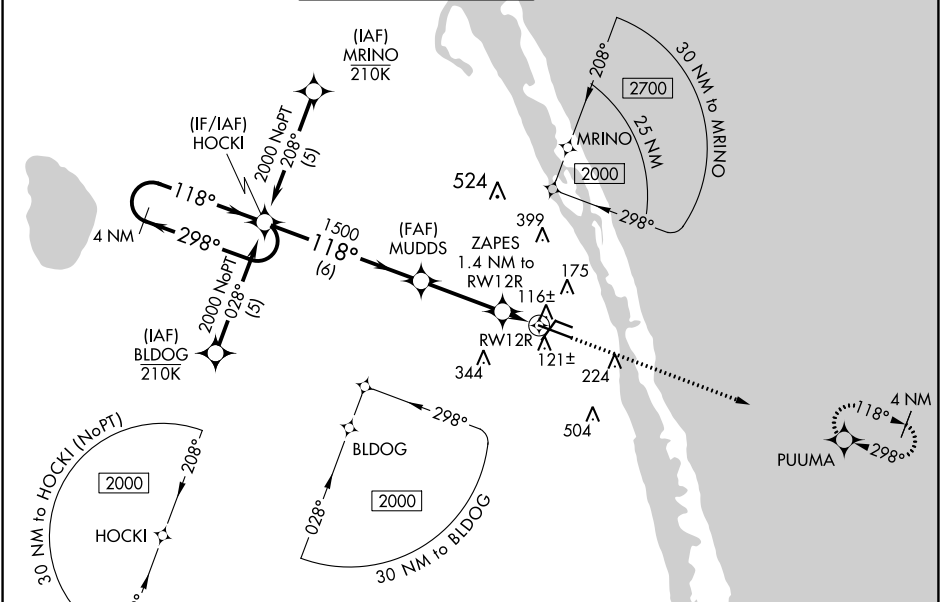
WAAS CH 53511 W12A	APP CRS 118°	Rwy ldg TDZE 23 Apt Elev 24	7314
--	------------------------	---	-------------

RNAV (GPS) RWY 12R
VERO BEACH RGNL (VRB)

⚠ Circling to Rwy 30R NA at night. Baro-VNAV NA when using Fort Pierce altimeter setting. For uncompensated Baro-VNAV systems, LNAV/VNAV NA below 0°C (32°F) or above 54°C (130°F). DME/DME RNP-0.3 NA. When local altimeter setting not received, use Fort Pierce altimeter setting and increase all DA 23 feet and all MDA 40 feet and increase LNAV Cats C and D visibility 1/8 mile and Circling Cat D visibility 1/4 mile.

MISSED APPROACH:
Climb to 2000 direct PUUMA and hold.

ATIS 120.575	PALM BEACH APP CON 123.625 225.4 (N)	VERO BEACH TOWER ★ 126.3 (CTAF) 0	GND CON 127.45	CLNC DEL 134.975	UNICOM 122.95
------------------------	--	---	--------------------------	----------------------------	-------------------------



ELEV 24 **D** **TDZE 23**

4 NM Holding Pattern

2000 ← **298°** / **118°** →

GP 3.00° TCH 42

HOCKI (2000) → **118°** → **MUDDS** (1500) → **1500** → **ZAPES** (1.4 NM to RW12R) → **RW12R**

2000 **PUUMA**

***500** ***1NAV only.**

6 NM **3.1 NM** **1.4 NM**

CATEGORY	A	B	C	D
LPV DA		279-3/4	256 (300-3/4)	
LNAV/VNAV DA		294-7/8	271 (300-7/8)	
LNAV MDA		380-1	357 (400-1)	
CIRCLING	560-1	536 (600-1)	560-1 1/2 536 (600-1 1/2)	660-2 636 (700-2)

MIRL Rwy 4-22, 12R-30L, and 12L-30R **0**
REIL Rwy 4, 12R, 22 and 30L **0**

118° to RW12R

12L **12R** **30L** **30R**

3504 X 75 **7314 X 106**

TWR 143

SE-3, 03 DEC 2020 to 31 DEC 2020

SE-3, 03 DEC 2020 to 31 DEC 2020