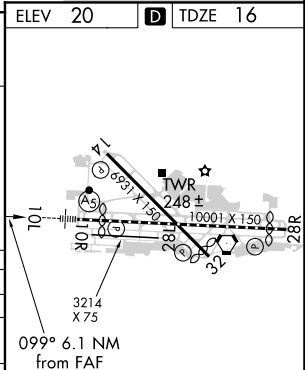
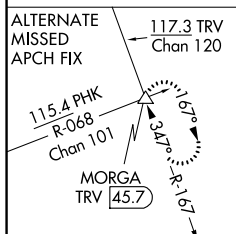


ILS or LOC RWY 10L
PALM BEACH INTL (PBI)

MISSED APPROACH: Climb to 1000 then climbing right turn to 2000 on heading 240° and PBI VORTAC R-189 to LANCH INT/PBI 10 DME and hold.

DME or RADAR
REQUIRED



HIRL Rwy 10L-28R REIL Rwys 10R, 14, 28L, 28R and 32 MIRL Rwys 14-32 and 10R-28L					
FAF to MAP 6.1 NM					
Knots	60	90	120	150	180
Min:Sec	6:06	4:04	3:03	2:26	2:02

SE-3, 03 DEC 2020 to 31 DEC 2020