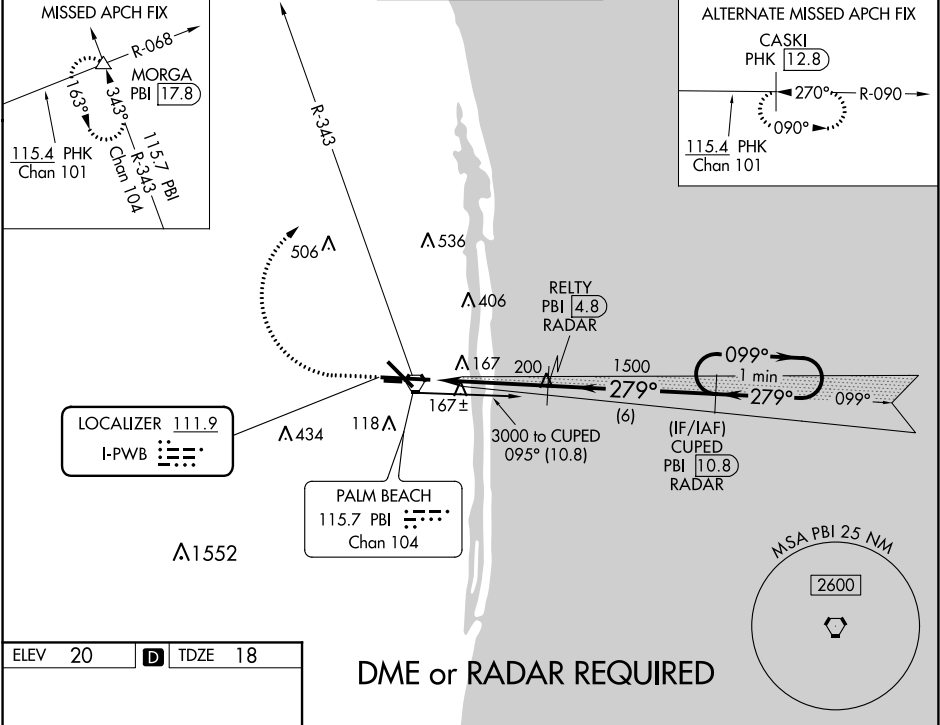


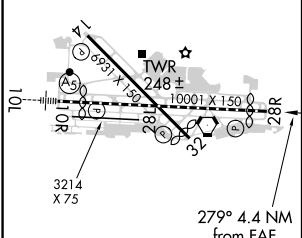
LOC I-PWB <b>111.9</b>	APP CRS <b>279°</b>	Rwy Idg TDZE Apt Elev <b>9189</b> <b>18</b> <b>20</b>
---------------------------	------------------------	--

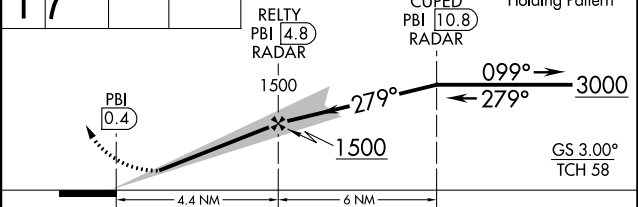
ILS or LOC RWY 28R  
PALM BEACH INTL (PBI)

 DME or RADAR required.	MISSED APPROACH: Climb to 500 then climbing right turn to 2000 on PBI VORTAC R-343 to MORGA INT/PBI 17.8 DME and hold.
--	--

D-ATIS <b>123.75</b>	PALM BEACH APP CON <b>128.3 317.4</b>	PALM BEACH TOWER <b>119.1 257.8</b>	GND CON <b>121.9 284.6</b>	CLNC DEL <b>121.6 284.6</b>
-------------------------	--	--	-------------------------------	--------------------------------



ELEV 20	D	TDZE 18
		
HIRL Rwy 10L-28R REIL Rwy 10R, 14, 28L, 28R and 32 MIRL Rwy 14-32 and 10R-28L FAF to MAP 4.4 NM		
Knots	60	90 120 150 180
Min:Sec	4:24	2:56 2:12 1:46 1:28

500	2000	PBI R-343	MORGA	VGSI and ILS glidepath not coincident (VGSI Angle 3.00/TCH 70).	One Minute Holding Pattern
					GS 3.00° TCH 58
CATEGORY	A	B	C	D	
S-ILS 28R	218/40 200 (200-3/4)				
S-LOC 28R	460/50	442 (500-1)	460/60 442 (500-1 1/4)	460-1 1/2 442 (500-1 1/2)	
CIRCLING	560-1	540 (600-1)	680-1 3/4 660 (700-1 3/4)	780-2 1/2 760 (800-2 1/2)	

SE-3, 03 DEC 2020 to 31 DEC 2020

SE-3, 03 DEC 2020 to 31 DEC 2020