
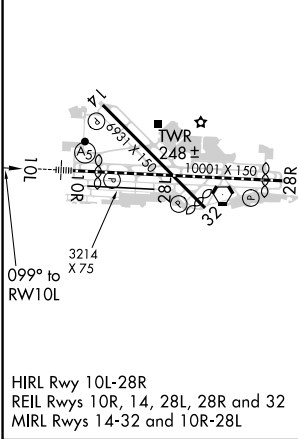
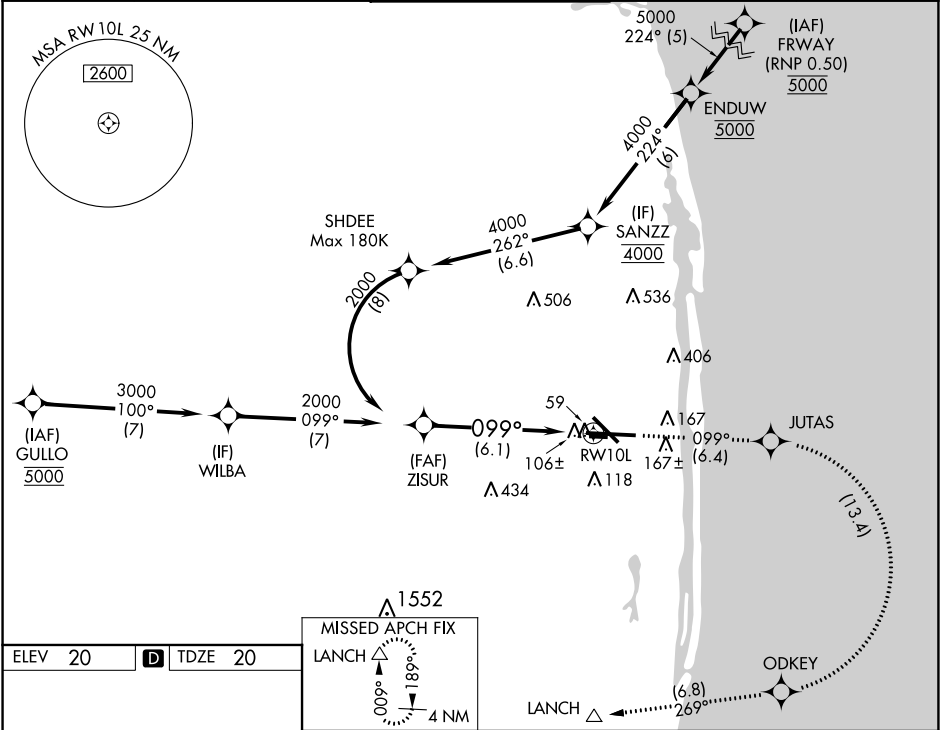


APP CRS	Rwy Idg	8800
099°	TDZE	20
	Apt Elev	20

RNAV (RNP) Z RWY 10L
PALM BEACH INTL (PBI)

<p>▼ For uncompensated Baro-VNAV systems, procedure NA below 2°C (36°F) or above 49°C (120°F). RF required. GPS required. For inop MALSR, increase RNP 0.11 all Cats visibility to RVR 5000 and 0.30 all Cats visibility to RVR 6000.</p>	<p>MALSR</p> 	<p>MISSED APPROACH: Climb to 2000 on track 099° to JUTAS and right turn to ODKEY and on track 269° to LANCH and hold.</p>
--	--	---

D-ATIS 123.75	PALM BEACH APP CON 128.3 317.4	PALM BEACH TOWER 119.1 257.8	GND CON 121.9 284.6	CLNC DEL 121.6
-------------------------	--	--	-------------------------------	--------------------------



<p>ZISUR</p> <p>2000</p>		<p>2000</p> <p>↑</p>	<p>tr</p> <p>099°</p>	<p>JUTAS</p> <p>✧</p>	<p>↷</p>	<p>ODKEY</p> <p>✧</p>	<p>tr</p> <p>269°</p>	<p>LANCH</p> <p>△</p>
<p>VGSI and RNAV glidepath not coincident (VGSI Angle 3.00/TCH 68).</p>								
<p>2000 ↗ 099° ↘ RW10L</p> <p>See planview for multiple IF locations.</p> <p>6.1 NM</p>								
<p>GP 3.00° TCH 52</p>								
CATEGORY	A	B	C	D				
RNP 0.11 DA	338/26		322 (400-½)					
RNP 0.30 DA	448/40		432 (500-¾)					
<p>AUTHORIZATION REQUIRED</p>								

SE-3, 03 DEC 2020 to 31 DEC 2020

SE-3, 03 DEC 2020 to 31 DEC 2020