

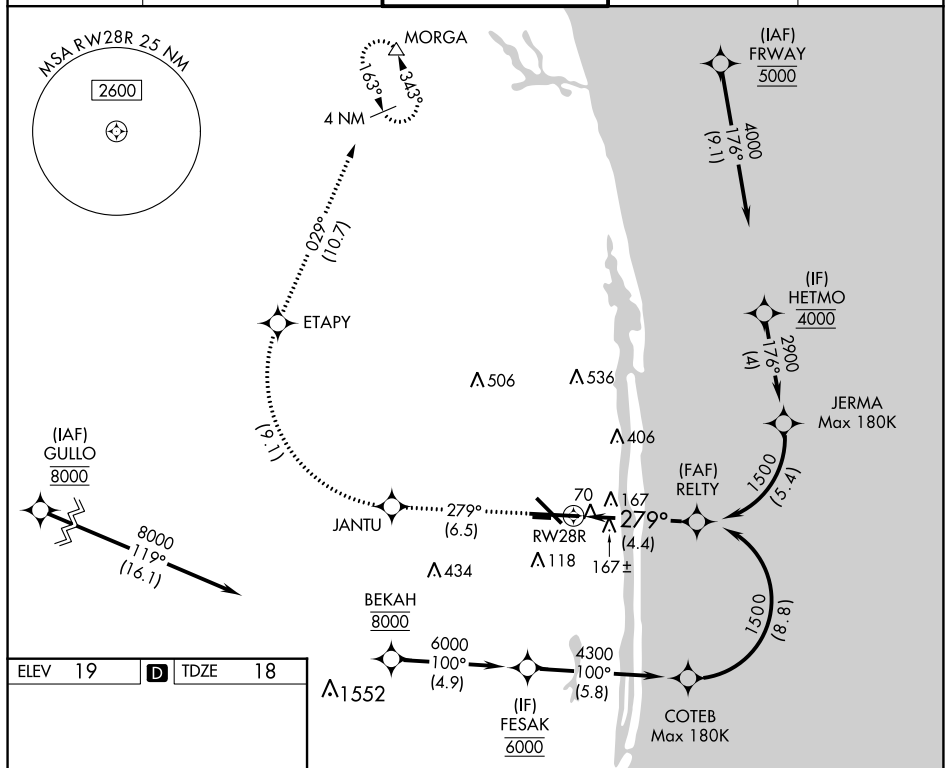
RNAV (RNP) Z RWY 28R
PALM BEACH INTL (PBI)

APP CRS	Rwy Idg	9189
279°	TDZE	18
	Apt Elev	19

T RF and GPS Required. For uncompensated Baro-VNAV systems, procedure NA below 3°C (38°F) or above 48°C (119°F).

MISSED APPROACH: Climb to 2000 on track 279° to JANTU and right turn to ETAPY and on track 029° to MORGA and hold.

D-ATIS 123.75	PALM BEACH APP CON 128.3 317.4	PALM BEACH TOWER 119.1 257.8	GND CON 121.9 284.6	CLNC DEL 121.6 284.6
-------------------------	--	--	-------------------------------	--------------------------------



HIRL Rwy 10L-28R

REIL Rwys 10R, 14, 28L, 28R and 32
MIRL Rwys 14-32 and 10R-28L

2000	JANTU	ETAPY	MORGA
tr 279°	[Symbol]	[Symbol]	tr 029° [Symbol]

See planview for multiple IF locations.

Procedure Turn NA

RW28R

279°

1500

GP 3.00°
TCH 58

CATEGORY	A	B	C	D
RNP 0.30 DA	404/60 386 (400-1¼)			

AUTHORIZATION REQUIRED