

WAAS CH <b>40018</b> <b>W14A</b>	APP CRS <b>141°</b>	Rwy Idg TDZE Apt Elev	<b>6000</b> <b>17</b> <b>19</b>
--	------------------------	-----------------------------	---------------------------------------

RNAV (GPS) Y RWY 14

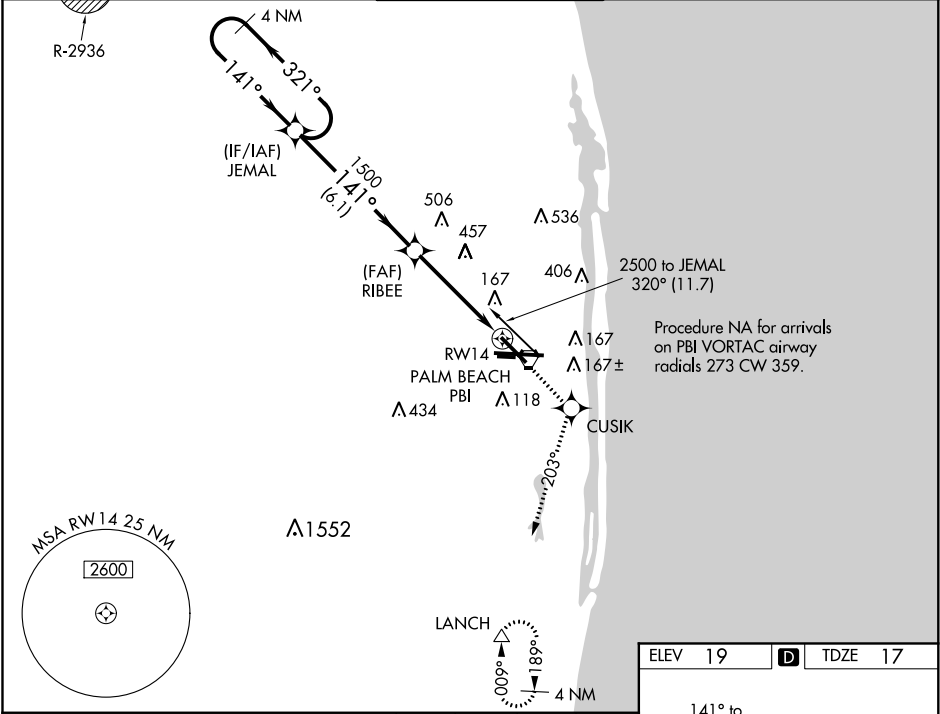
PALM BEACH INTL (PBI)

⚠

For uncompensated Baro-VNAV systems, LNAV/VNAV NA below -15°C (5°F) or above 48°C (118°F).  
DME/DME RNP-0.3 NA. Visibility reduction by helicopters NA.

MISSED APPROACH: Climb to 2000 direct CUSIK and on track 203° to LANCH and hold.

D-ATIS <b>123.75</b>	PALM BEACH APP CON <b>128.3 317.4</b>	PALM BEACH TOWER <b>119.1 257.8</b>	GND CON <b>121.9 284.6</b>	CLNC DEL <b>121.6 284.6</b>
-------------------------	--	--	-------------------------------	--------------------------------



VGSI and RNAV glidepath not coincident (VGSI Angle 3.00/TCH 66).

4 NM

JEMAL

1500

321°

141°

GP 3.00°

TCH 51

4 NM

RIBEE

1500

141°

2 NM to RWY14

RWY14

2000

CUSIK

tr 203°

LANCH

\* LNAV only

6.1 NM

2.4 NM

2 NM

CATEGORY	A	B	C	D
LPV DA	293-1		276 (300-1)	
LNAV/VNAV DA	475-1½		458 (500-1½)	
LNAV MDA	720-1	703 (800-1)	720-2 703 (800-2)	720-2¼ 703 (800-2¼)
CIRCLING	720-1	701 (800-1)	720-2 701 (800-2)	780-2½ 760 (800-2½)

