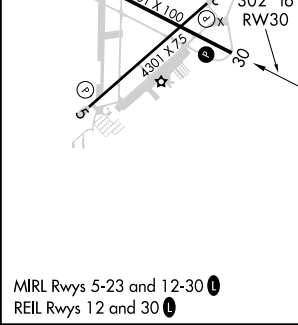
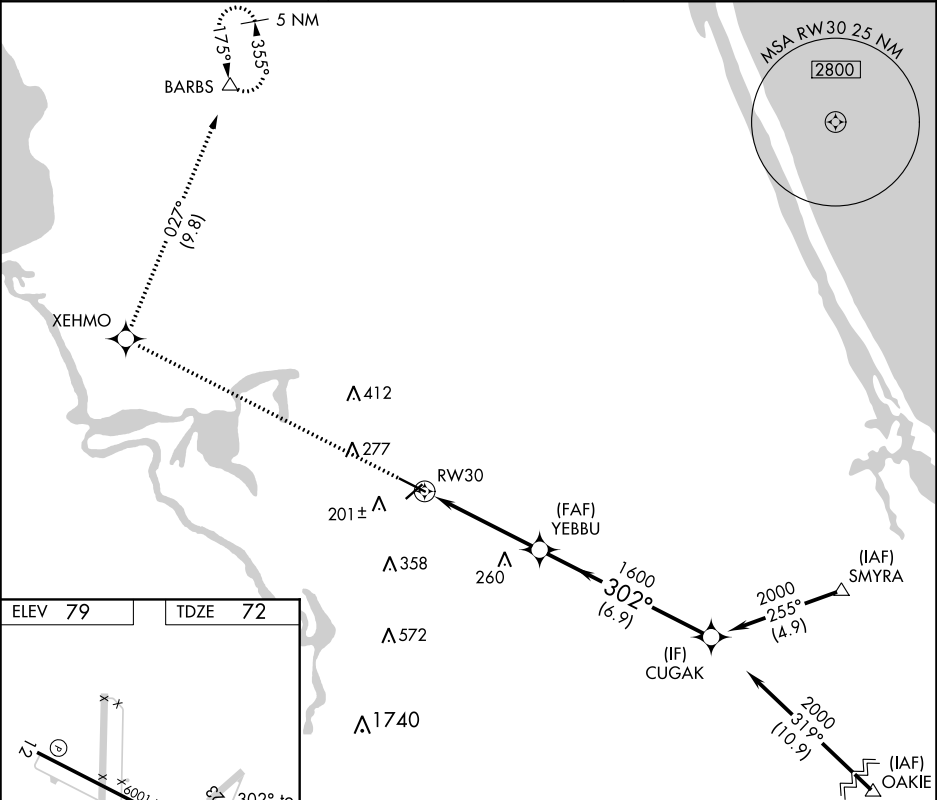


APP CRS	Rwy Idg	6001
302°	TDZE	72
	Apt Elev	79

RNAV (GPS) RWY 30  
DELAND MUNI-SIDNEY H TAYLOR FIELD (DED)

RNP APCH.	MISSED APPROACH: Climb to 3000 direct XEHMO and right turn on track 027° direct BARBS and hold.
<p>▼ Rwy 30 helicopter visibility reduction below ¾ SM NA. VDP NA when using Daytona Beach Intl altimeter setting. When local altimeter setting not received, use Daytona Beach Intl altimeter setting and increase all MDAs 40 feet.</p>	

AWOS-3 119.575	DAYTONA APP CON 125.35 322.3	UNICOM 123.075 (CTAF) 0
-------------------	---------------------------------	----------------------------



3000	XEHMO	BARBS	VGSI and descent angles not coincident (VGSI Angle 3.00/TCH 54).	CUGAK
		1.2 NM to RW30		
			YEBBU	
			1600	
			302°	
			2000	
			31.9°	
			2000	
			(10.9)	
			255°	
			2000	
			(4.9)	
			302°	
			1600	
			(6.9)	
			260°	
			(FAF) YEBBU	
			201±	
			Δ 358	
			Δ 277	
			Δ 412	
			Δ 572	
			Δ 1740	
			Δ 355	
			Δ 175	
			5 NM	
			BARBS	
			027°	
			(9.8)	
			XEHMO	
			302°	
			to RW30	
			302°	
			301 X 175	
			6001 X 100	
			12	
			5	
			12-30	
			MIRL Rwy 5-23 and 12-30	
			REIL Rwy 12 and 30	

SE-3, 03 DEC 2020 to 31 DEC 2020

SE-3, 03 DEC 2020 to 31 DEC 2020