

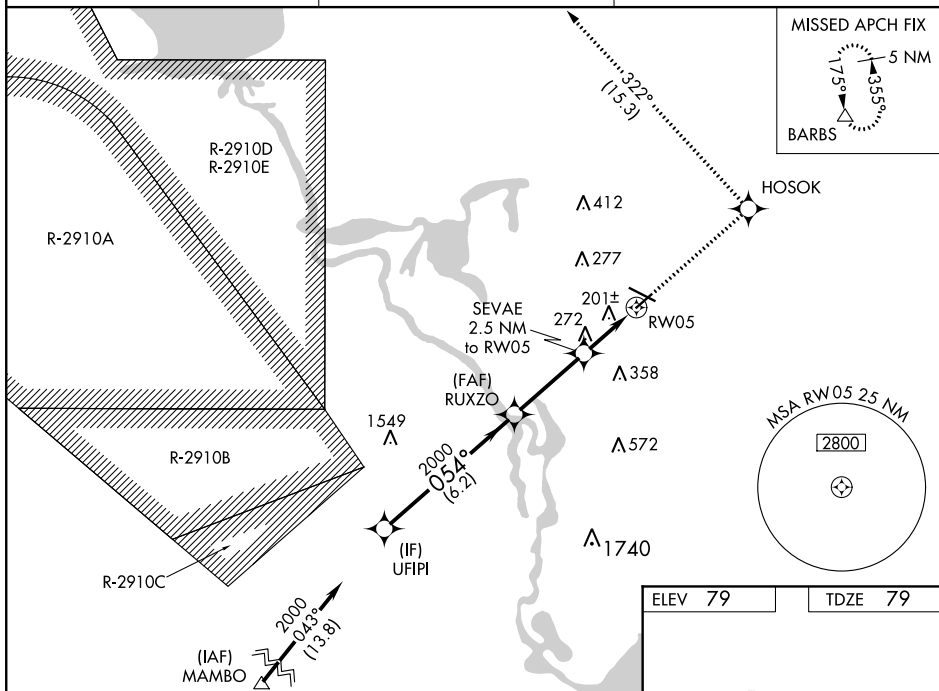
RNAV (GPS) RWY 5

DELAND MUNI-SIDNEY H TAYLOR FIELD (DED)

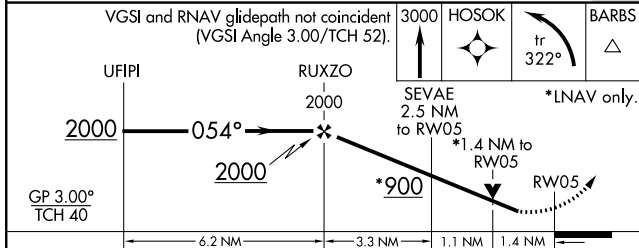
▼ For uncompensated Baro-VNAV systems, LNAV/VNAV NA below -15°C (5°F) or above 54°C (130°F). Rwy 5 helicopter visibility reduction below ¾ SM NA. When local altimeter setting not received, use Daytona Beach Intl altimeter setting and increase all DAs 38 feet and all MDAs 40 feet; increase LPV all Cats, LNAV/VNAV all Cats, and LNAV Cat D visibility ¼ mile.

MISSED APPROACH: Climb to 3000
direct HOSOK and left turn on track
322° to BARBS and hold.

DAYTONA APP CON
125.35 322.3

UNICOM
123.075 (CTAF) 

VGSI and RNAV glidepath not coincident
(VGSI Angle 3.00/TCH 52).



CATEGORY		A	B	C	D
LPV	DA	385-1 306 (400-1)			
LNAV/ VNAV	DA	577-1 $\frac{3}{4}$ 498 (500-1 $\frac{3}{4}$)			
LNAV	MDA	580-1 501 (600-1)		580-1 $\frac{3}{8}$ 501 (600-1 $\frac{3}{8}$)	

