

HI-ILS or LOC Y RWY 6

LOC I-HST 109.9	APCH CRS 055°	Rwy Idg 11,201 TDZE Arpt Elev 6	JAL-494 [USAF]	HOMESTEAD ARB (KHST)
---------------------------	-------------------------	---	----------------	----------------------

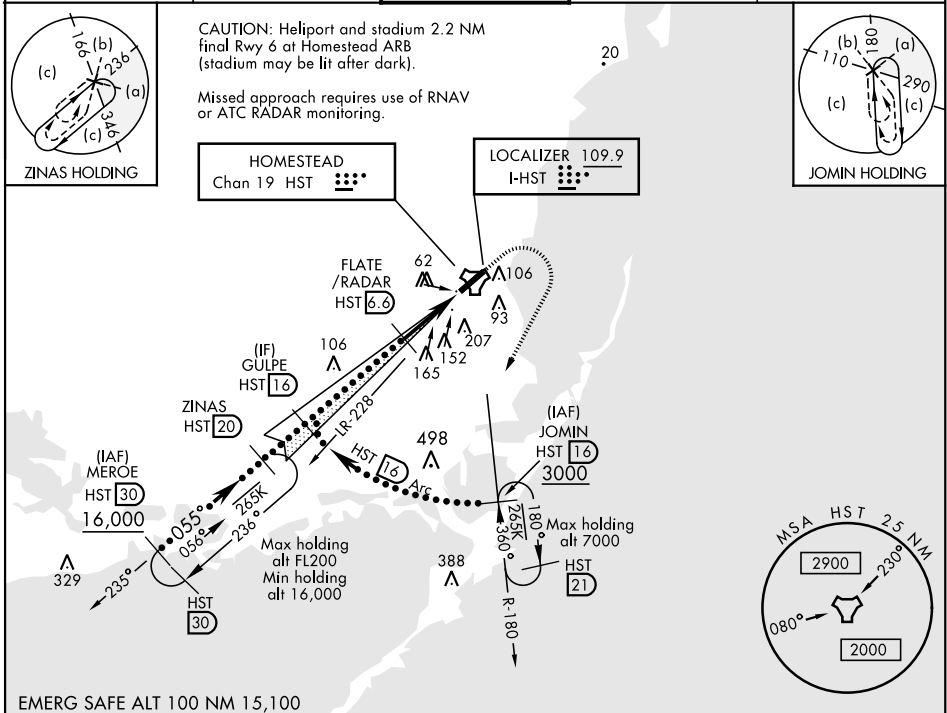
RADAR or DME required.

▼ * When ALS inop, increase RVR to 40, vis to ¾ mile.
** When ALS inop, increase RVR to 60, vis to 1½ miles.
*** Circling NA NW of Rwy 6-24.

ALSF-1
(A1)

MISSED APPROACH: Climb to 800 then climbing right turn to 3000 intercept HST TACAN R-180 to JOMIN and hold.

ATIS ★ 132.275 269.9	HOMESTEAD APP CON 123.8 257.675	HOMESTEAD TOWER 133.45 279.55	GND CON 121.75 275.8	CLNC DEL 121.75 275.8
--------------------------------	---	---	--------------------------------	---------------------------------



<p>Diagram illustrating the approach procedure, showing the glide slope (GS 2.50°), transition height (TCH 54), and various navigation aids (LOC only, CODMA, TACAN) and distances (5 NM, 0.4 NM).</p>				<p>Diagram illustrating the HIRL Rwy 6-24, showing the runway layout, navigation aids, and distances (11,201 x 300, 5.0 NM).</p>	
ELEV 6				TDZE 5	
HIRL Rwy 6-24					
CATEGORY	C	D	E		
S-ILS 6 *	205/24		200 (200-½)		
S-LOC 6 **	460/45		455 (500-7%)		
*** CIRCLING	520-1½ 514 (600-1½)	580-2 574 (600-2)	780-2¾ 774 (800-2¾)	FAF to MAP 5.0 NM	
				Knots	120 140 160 180 200
				Min:Sec	2:30 2:09 1:53 1:40 1:30

HI-ILS or LOC Y RWY 6