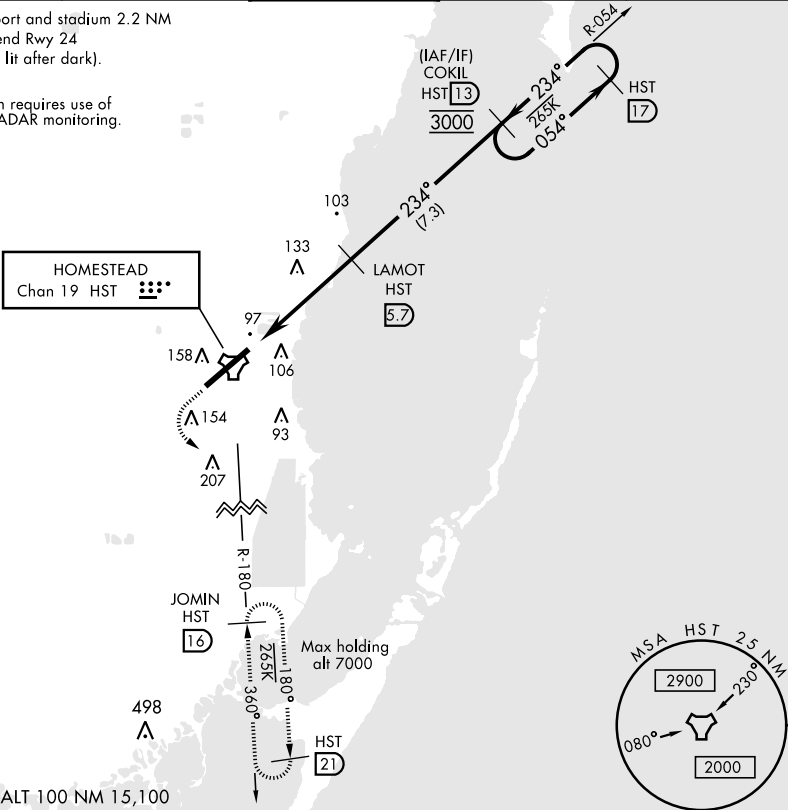


TACAN RWY 24

TACAN Chan 19	HST APCH CRS 234°	Rwy Idg 11,201 TDZE Arprt Elev 5 6	AL-494 [USAF]	HOMESTEAD ARB (KHST)
▼ * When ALS inop increase CAT AB RVR to 55, vis to 1 mile; CAT CDE RVR to 60, vis to 1½ miles. ** Circling NA NW of Rwy 6-24.			SALS (A2)	MISSED APPROACH: Climb to 800 then climbing left turn to 3000 intercept HST TACAN R-180 to JOMIN and hold.
ATIS ★ 132.275 269.9	HOMESTEAD APP CON 123.8 257.675	HOMESTEAD TOWER 133.45 279.55	GND CON 121.75 275.8	CLNC DEL 121.75 275.8

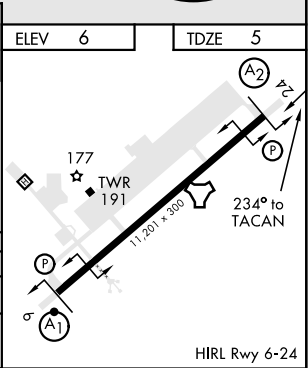
CAUTION: Heliport and stadium 2.2 NM from departure end Rwy 24 (stadium may be lit after dark).

Missed approach requires use of RNAV or ATC RADAR monitoring.



EMERG SAFE ALT 100 NM 15,100

800	3000	JOMIN	LAMOT	COKIL	054°	3000
↑	HST R-180	HST 16	HST 5.7	HST 13	234°	234°
TACAN	MOMOR	2.1	1400			
RW24	1.2					
5 NM	4.5 NM					
CATEGORY	A	B	C	D	E	
S-24 *	420/40	415 (500-¾)	420/50	415 (500-1)		
** CIRCLING	440-1 434 (500-1)	500-1 494 (500-1)	520-1½ 514 (600-1½)	580-2 574 (600-2)	780-2¾ 774 (800-2¾)	



TACAN RWY 24