

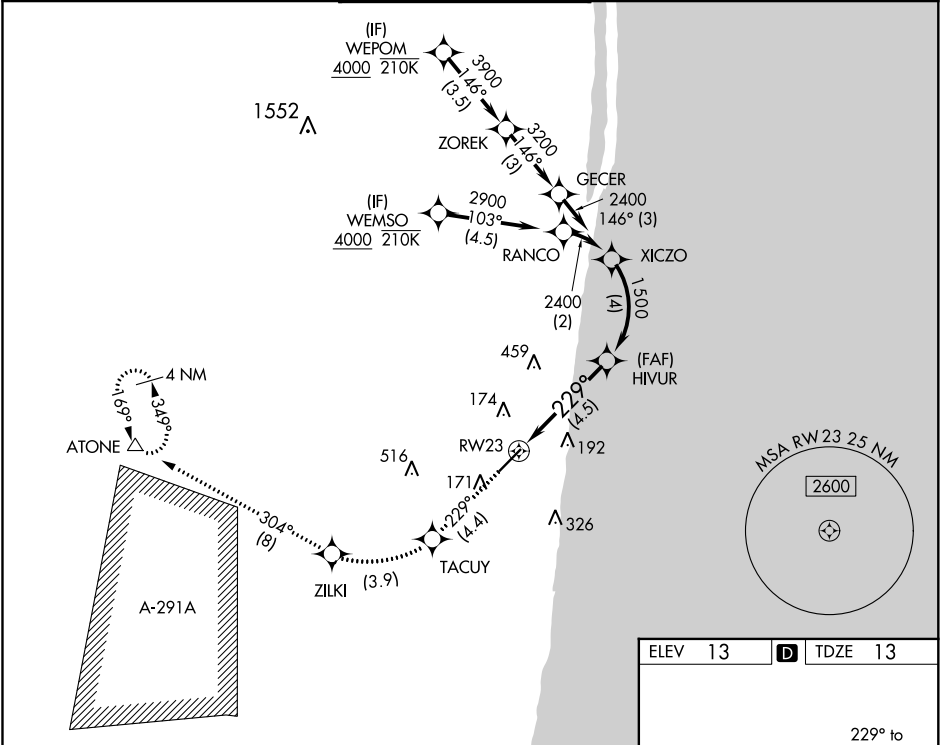
APP CRS	Rwy Idg	5898
229°	TDZE	13
	Apt Elev	13

RNAV (RNP) Z RWY 23

BOCA RATON (BCT)

RNP AR APCH. RF Required.	MISSED APPROACH: Climb to 2100 on track 229° to TACUY, right turn to ZILKI and track 304° to ATONE and hold.
▼ For uncompensated Baro-VNAV systems, procedure NA below -15°C or above 54°C. In minimum visibility conditions, bright lights on highway ¼ mile north of airport may be mistaken for runway lights.	

AWOS-3 121.125	PALM BEACH APP CON 125.2 343.6	BOCA RATON TOWER★ 118.425 (CTAF) 0	GND CON 121.8	CLNC DEL 121.8	CLNC DEL 127.35 (when twr closed)
-------------------	-----------------------------------	---------------------------------------	------------------	-------------------	---



2100	TACUY	ZILKI	ATONE	See planview for multiple IF locations.
↑ tr 229°	↗	↗	△	
VGS1 and RNAV glidepath not coincident (VGS1 Angle 3.00/TCH 40).				
CATEGORY	A	B	C	D
RNP 0.30 DA	519-1⅜ 506 (600-1⅜)			
AUTHORIZATION REQUIRED				
MIRL Rwy 5-23 0 REIL Rws 5 and 23 0				