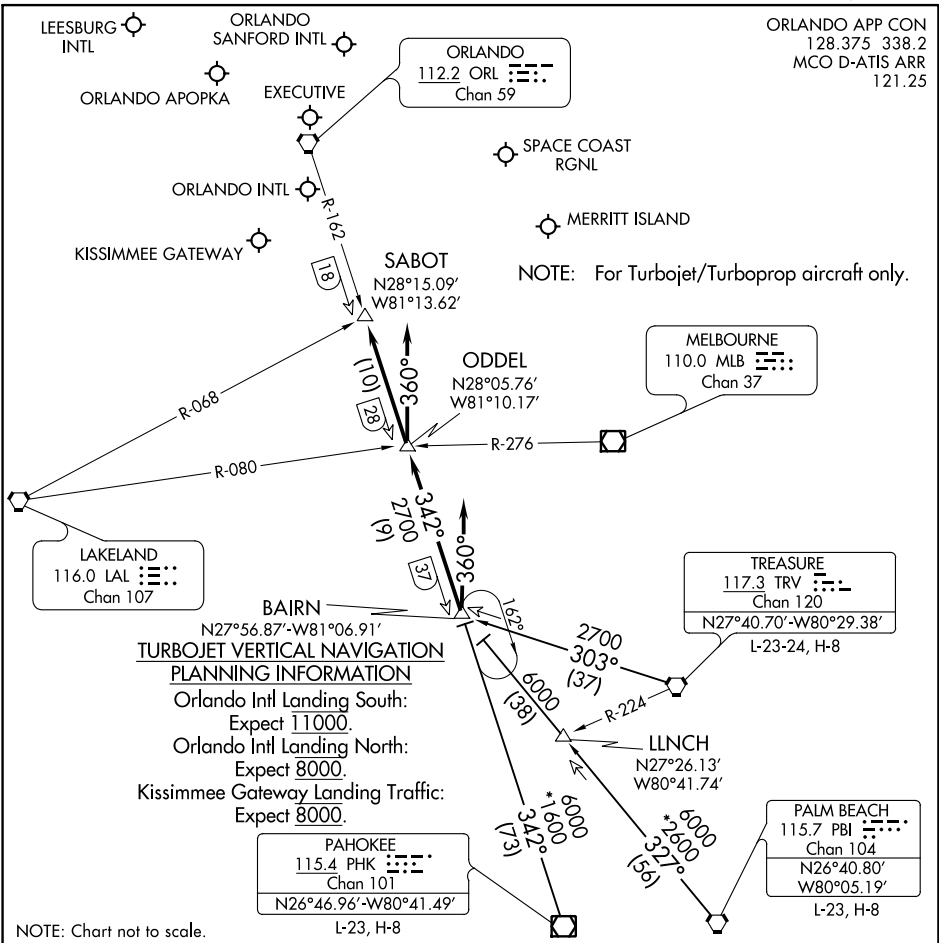


GOOFY SEVEN ARRIVAL

AL-571 (FAA)

ORLANDO, FLORIDA



ARRIVAL ROUTE DESCRIPTION

PAHOKEE TRANSITION (PHK.GOOFY7): From over PHK VOR/DME on PHK R-342 to BAIRN INT.  
Thence. . . .  
PALM BEACH TRANSITION (PBI.GOOFY7): From over PBI VORTAC on PBI R-327 to BAIRN INT.  
Thence. . . .  
TREASURE TRANSITION (TRV.GOOFY7): From over TRV VORTAC on TRV R-303 to BAIRN INT.  
Thence. . . .  
ORLANDO INTL:  
. . . .Rwy 17/18: From over BAIRN INT on ORL VORTAC R-162 to ODDEL INT. Depart ODDEL INT heading 360° for vector to final approach course.  
. . . .Rwy 35/36: Depart BAIRN INT heading 360° for vector to final approach course.  
LEESBURG INTL: . . . .From over BAIRN INT on ORL VORTAC R-162 to SABOT INT. Expect RADAR vectors to the airport.  
ALL OTHER AIRPORTS: . . . .From over BAIRN INT on ORL VORTAC R-162 to SABOT INT. Expect RADAR vectors to final approach course.

GOOFY SEVEN ARRIVAL

ORLANDO, FLORIDA