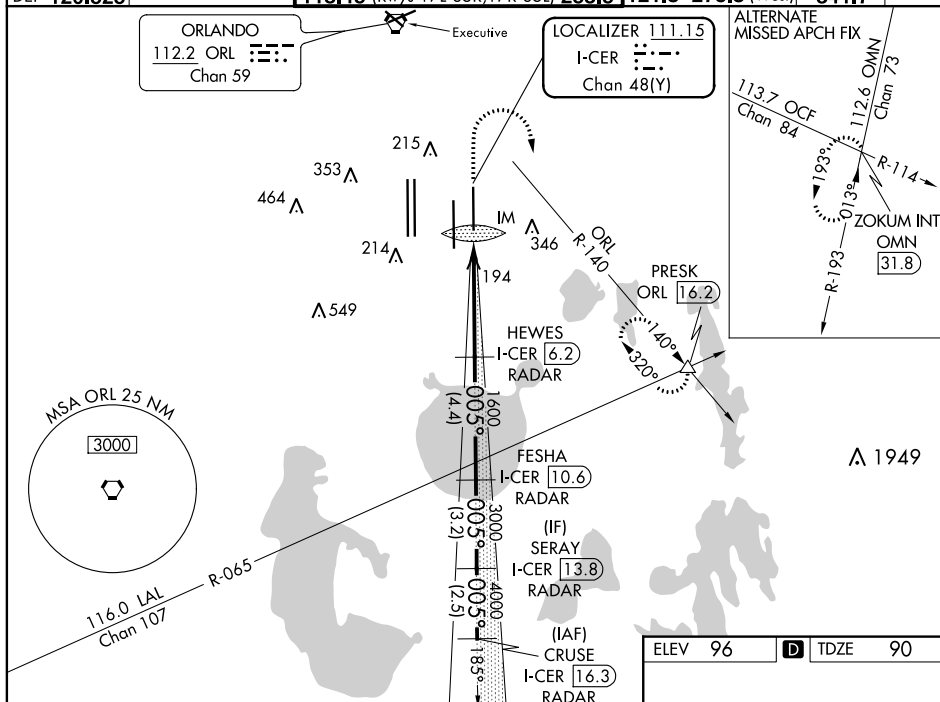


ILS RWY 35R (CAT II & III)
ORLANDO INTL (MCO)

ALSF-2

MISSED APPROACH: Climb to 500 then climbing right turn to 3000 on ORL VORTAC R-140 to PRESK INT/ORL 16.2 DME and hold, continue climb-in-hold to 3000.

ALTERNATE MISSED APCH FIX	
------------------------------	--



CRUSE
I-CER 16.3
RADAR

SERAY
I-CER 13.8
RADAR

FESHA
I-CER 10.6
RADAR

HEWES
I-CER 6.2
RADAR

5000
4000
3000
1600

GS 3.00°
TCH 55

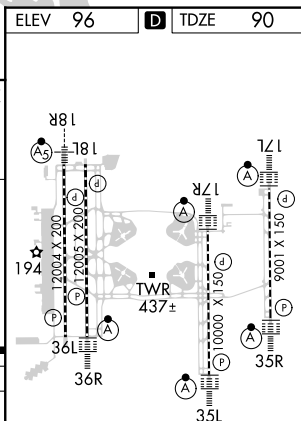
2.5 NM 3.2 NM 4.4 NM 4.6 NM

VGS and ILS glidepath not coincident
(VGS Angle 3.00/TCH 73).

VGS	ILS	PRES
500	ORL R-140	△

	2.5 NM	3.2 NM	4.1 NM	4.6 NM	1050
CATEGORY	A	B	C	D	
S-ILS 35R	CAT II RA 101/12 100 DA 190				
S-ILS 35R	CAT III RVR 06				

CATEGORY II & III ILS - SPECIAL AIRCREW
& AIRCRAFT CERTIFICATION REQUIRED



HIRL all Rwy
REIL Rwy 36L
TDZ/CL Rwy 17L/R, 18R, 35L/R
and 36R