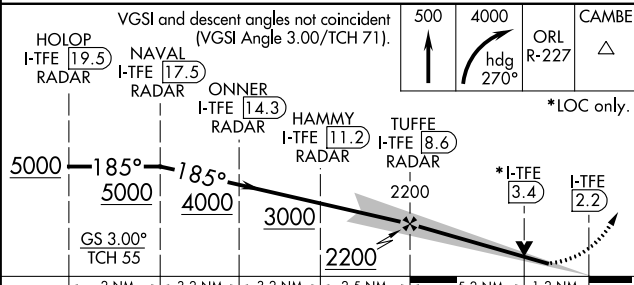
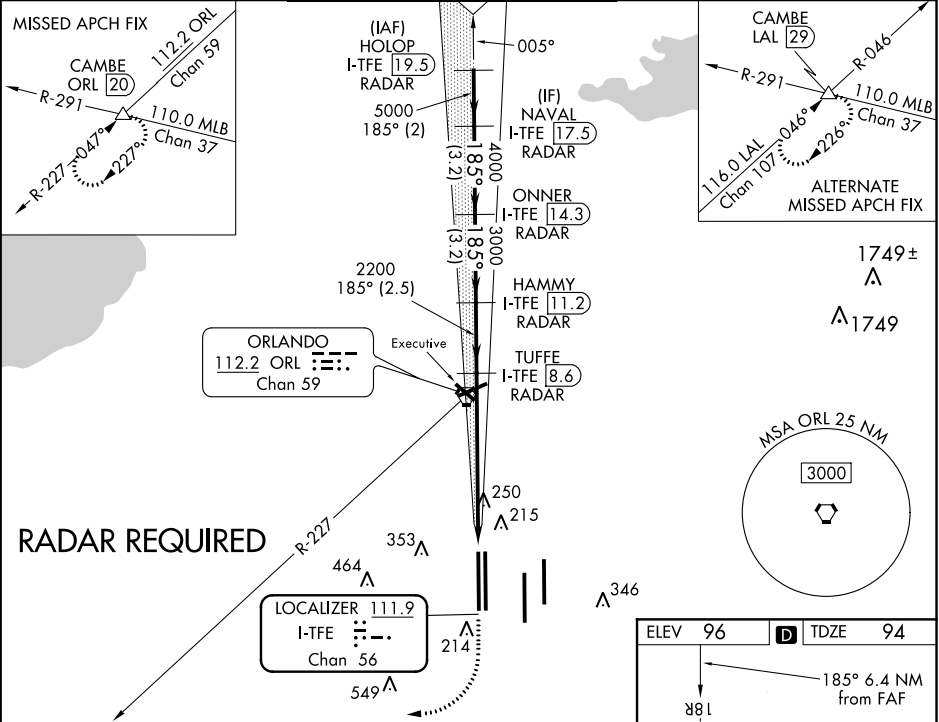


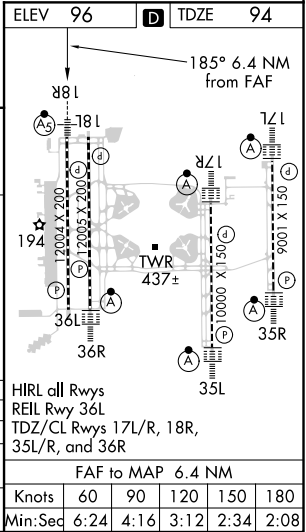
LOC/DME I-TFE	APP CRS	Rwy Idg
<b>111.9</b>	<b>185°</b>	<b>12004</b>
Chan <b>56</b>		TDZE <b>94</b>
		Apt Elev <b>96</b>

ILS or LOC RWY 18R  
ORLANDO INTL (MCO)

<b>Simultaneous approach authorized.</b> DME or RADAR required.		MALSR	MISSED APPROACH: Climb to 500 then climbing right turn to 4000 on heading 270° and on ORL VORTAC R-227 to CAMBE INT/ORL 20 DME and hold, continue climb-in-hold to 4000.	
D-ATIS	ORLANDO APP CON	ORLANDO TOWER	GND CON	CLNC DEL
ARR <b>121.25</b>	<b>124.8</b>	(Rwys 18L-36R, 18R-36L) <b>124.3</b>	(East) <b>126.4 275.8</b>	<b>134.7</b>
DEP <b>120.525</b>	<b>307.0</b>	(Rwys 17L-35R, 17R-35L) <b>118.45</b>	(West) <b>121.8 275.8</b>	<b>341.7</b>



CATEGORY	A	B	C	D
S-ILS 18R		294/18	200 (200-1/2)	
S-LOC 18R	540/24	446 (500-1/2)	540/45	446 (500-7/8)
CIRCLING	740-1	644 (700-1)	740-1 3/4	740-2



SE-3, 03 DEC 2020 to 31 DEC 2020

SE-3, 03 DEC 2020 to 31 DEC 2020