

LOC/DME I-DDO	APP CRS	Rwy Idg	10000
110.5	005°	TDZE	88
Chan 42		Apt Elev	96

ILS or LOC RWY 35L

ORLANDO INTL (MCO)

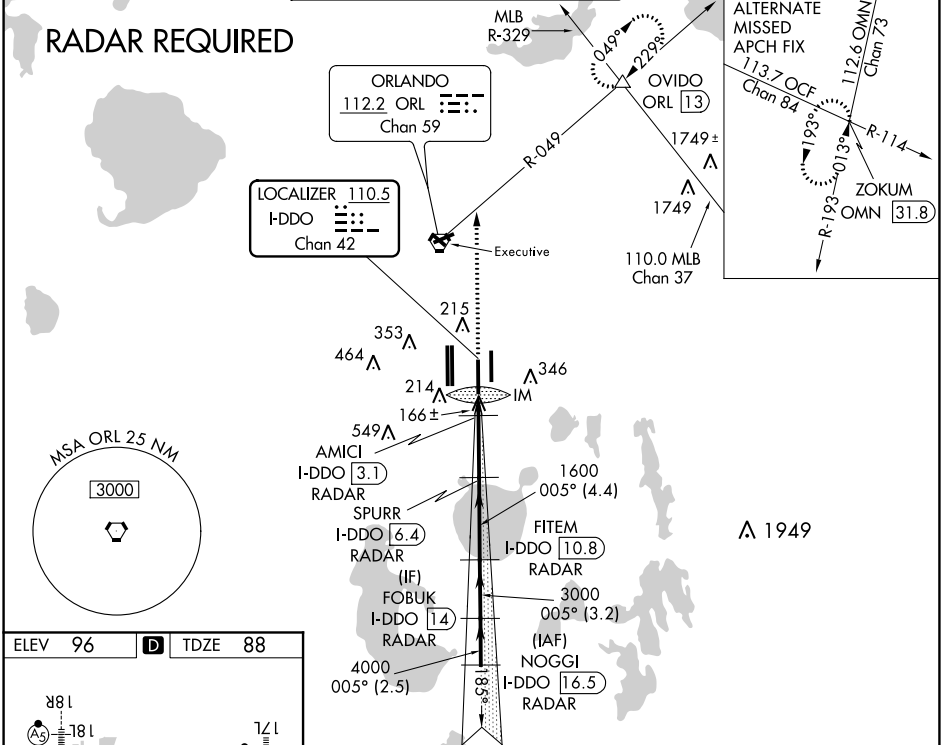
⚠

DME or RADAR required. Bright lights on highway midway between Rwy 35L and Rwy 35R may be mistaken for runway lights. Simultaneous approach authorized. When using alternate missed approach, simultaneous approach NA.

ALSF-2

MISSED APPROACH: Climb to 3000 on heading 005° and ORL VORTAC R-049 to OVIDO INT/ORL 13 DME and hold.

D-ATIS	ORLANDO APP CON	ORLANDO TOWER	GND CON	CLNC DEL	CPDLC
ARR 121.25	124.8 307.0	124.3 (Rwys 18L-36R, 18R-36L) 253.5	126.4 275.8 (East)	134.7	
DEF 120.525		118.45 (Rwys 17L-35R, 17R-35L) 253.5	121.8 275.8 (West)	341.7	



3000		hdg 005°		ORL R-049		OVIDO		VGSI and ILS glidepath not coincident (VGSI Angle 3.00/TCH 72).		NOGCI	
*LOC only:		I-DDO 1.8		AMICI I-DDO 3.1		I-DDO 6.4		RADAR		NOGCI I-DDO 16.5	
CATEGORY		A		B		C		D			
S-ILS 35L		288/18		200 (200-½)							
S-LOC 35L		420/24		332 (400-½)		420/26		332 (400-½)			
CIRCLING		740-1		644 (700-1)		740-1¾		644 (700-1¾)		740-2	
										644 (700-2)	