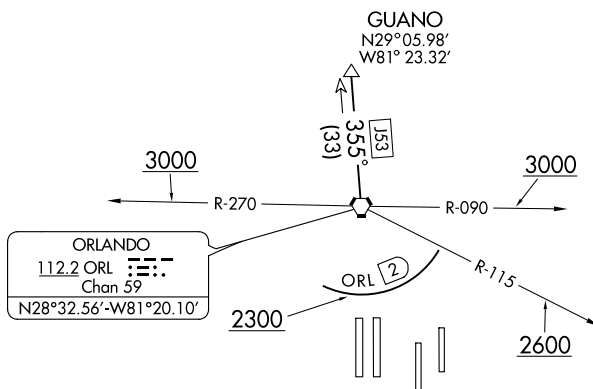


TOP ALTITUDE:
5000

TAKEOFF MINIMUMS
Rwys 17L/R, 18L/R, 35L/R, 36L/R: Standard.



NOTE: DME and RADAR required.
NOTE: Turbojets only.

NOTE: Chart not to scale.

T

DEPARTURE ROUTE DESCRIPTION

TAKEOFF RWYS 17L/R, 18L/R: Climb on heading as assigned. Thence. . .

TAKEOFF RWYS 35L/R, 36L/R: Climb on heading as assigned. Cross 2 DME south of ORL VORTAC at or above 2300, cross ORL VOTRAC R-115 at or above 2600, cross ORL VORTAC R-090 or R-270 at or above 3000. Thence: . . .

...for vectors to ORL VORTAC R-355 to GUANO. Maintain 5000. Expect further clearance to filed altitude/flight level 10 minutes after departure.