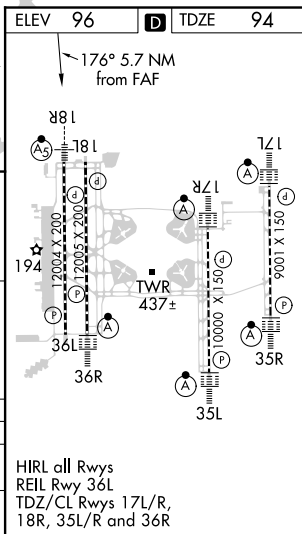
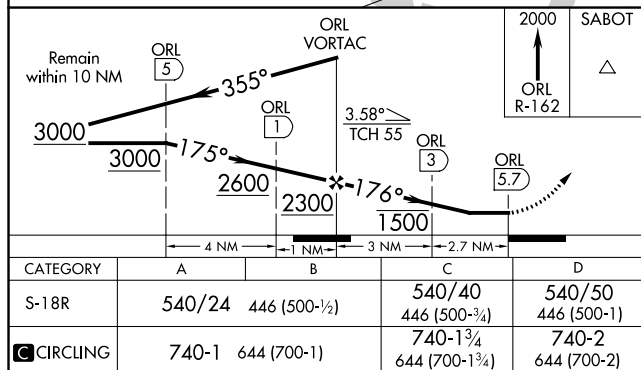
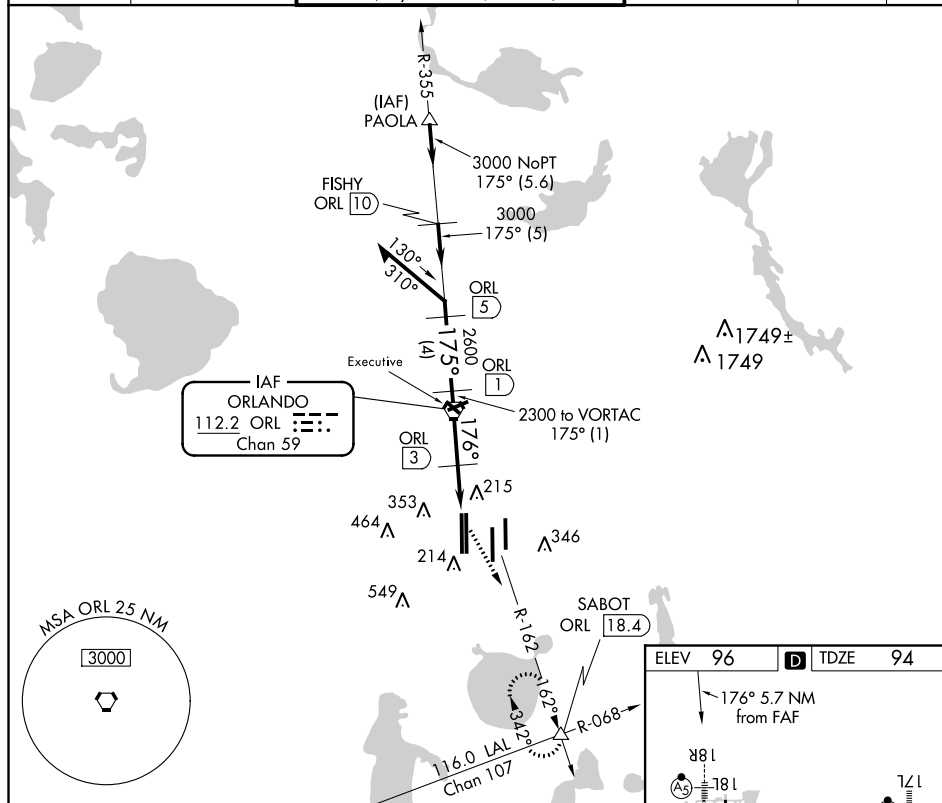


VOR/DME RWY 18R
ORLANDO INTL (MCO)



MISSED APPROACH: Climb to 2000 via ORL R-162 to SABOT INT and hold.

D-ATIS		ORLANDO APP CON		ORLANDO TOWER		GND CON		CLNC DEL		CPDLC	
ARR	121.25			124.3	(Rwys 18L-36R, 18R-36L)	253.5	126.4	275.8 (East)	134.7		
DEP	120.525	124.8	307.0	118.45	(Rwys 17L-35R, 17R-35L)	253.5	121.8	275.8 (West)	341.7		



SE-3, 03 DEC 2020 to 31 DEC 2020

SE-3, 03 DEC 2020 to 31 DEC 2020