


MILTON, FLORIDA

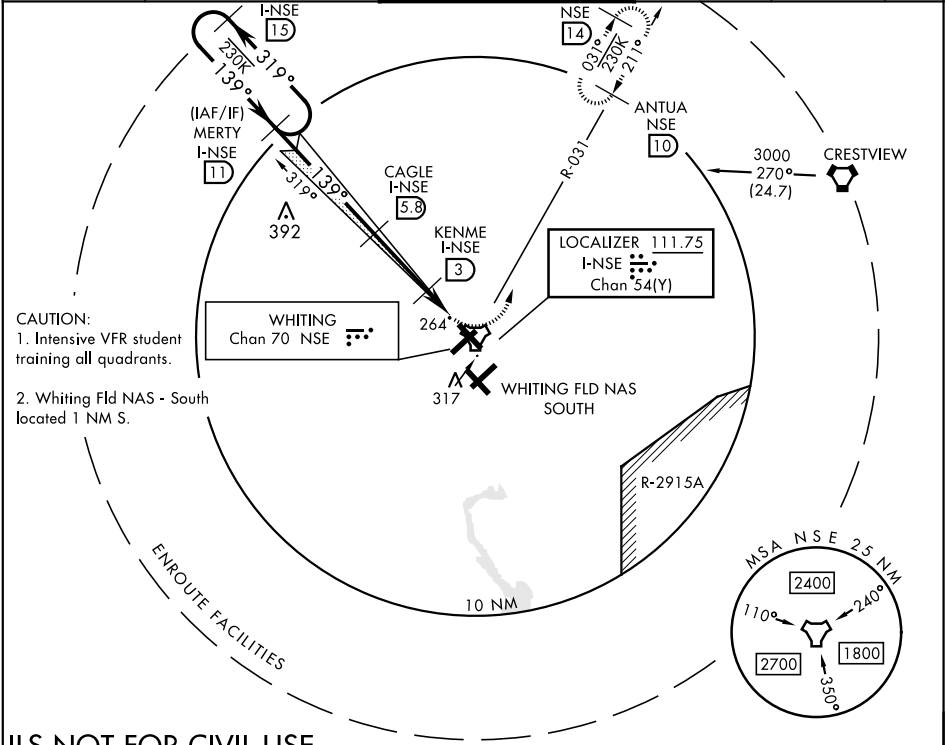
ILS Y or LOC/DME RWY 14

LOC/DME I-NSE <b>111.75</b> Chan <b>54(Y)</b>	APCH CRS <b>139°</b>	Rwy ldg <b>6001</b> TDZE <b>199</b> Arpt Elev <b>199</b>
---	-------------------------	--

AL-602 [USN]

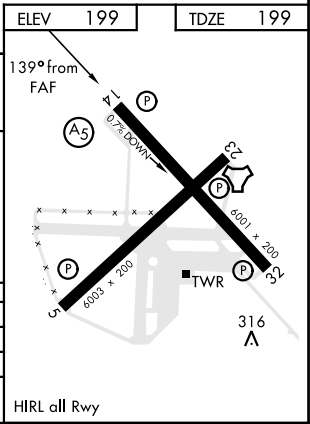
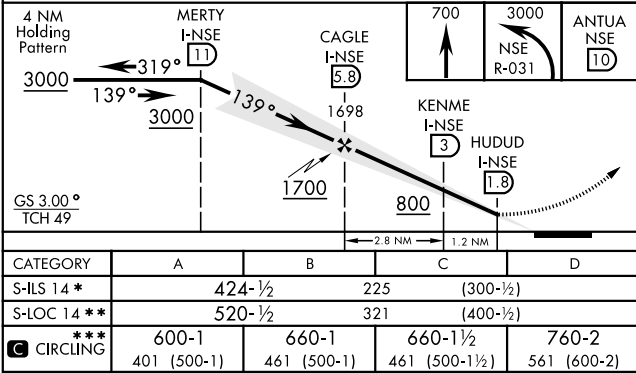
WHITING FLD NAS - NORTH (KNSE)

TACAN required. ▼ ** When ALS inop, increase vis to ¾ mile. *** When ALS inop, increase vis to 1 mile. *** Circling not authorized in sector SE of Rwy 5-23 and SW of Rwy 14-32.		MALS R 	MISSED APPROACH: Climb to 700. Then climbing left turn to 3000. Intercept NSE TACAN R-031 to ANTUA and hold. Continue climb in hold. Contact Pensacola APP CON.			
ATIS ★ 290.325	PENSACOLA APP CON 127.35 278.8	NORTH WHITING TOWER ★ 121.4 306.925		GND CON 251.15	CLNC DEL 257.775	ASR



ILS NOT FOR CIVIL USE

EMERG SAFE ALT 100 NM 3500



MILTON, FLORIDA

30° 43' N-87° 01' W

WHITING FLD NAS - NORTH (KNSE)

Amtd 3 10SEP20

ILS Y or LOC/DME RWY 14

SE-3, 03 DEC 2020 to 31 DEC 2020

SE-3, 03 DEC 2020 to 31 DEC 2020