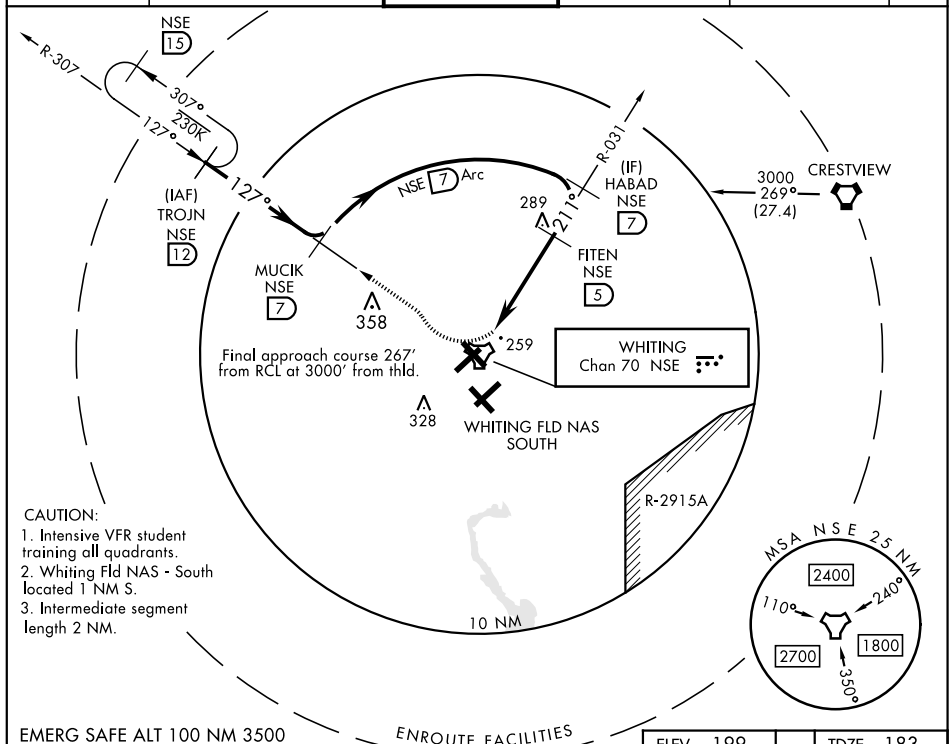


TACAN RWY 23

TACAN NSE Chan 70	APCH CRS 211°	Rwy Idg 6003 TDZE 183 Arprt Elev 199	AL-602 [USN] WHITING FLD NAS - NORTH (KNSE)				
<div><div></div><div>* Circling not authorized in sector SE of Rwy 5-23 and SW of Rwy 14-32.</div></div>			<div>MISSED APPROACH: Climb to 600. Then climbing right turn to 3000. Intercept NSE TACAN R-307 to TROJN and hold. Continue climb in hold. Contact Pensacola APP CON.</div>				
ATIS ★ 290.325	PENSACOLA APP CON 127.35 278.8		NORTH WHITING TOWER ★ 121.4 306.925		GND CON 251.15	CLNC DEL 257.775	ASR



600	3000	TRJN
↑	NSE R-307	NSE 12

CATEGORY	A	B	C	D
S-23	540-1 357 (400-1)			
CIRCLING*	600-1 401 (500-1)	660-1 461 (500-1)	660-1½ 461 (500-1½)	760-2 561 (600-2)

Diagram details: TACAN, BIMSE 0.9, FITEN 5, HABAD R-031 7, MUCIK R-307 7, TRJN R-307 12, 127°, 3000, 1700, 211°, 4.1 NM, Arc, 2.82° TCH 52, 6001 x 200, 6003 x 160, TWIR 242, 211° to TACAN, 0.7% UP, 31.