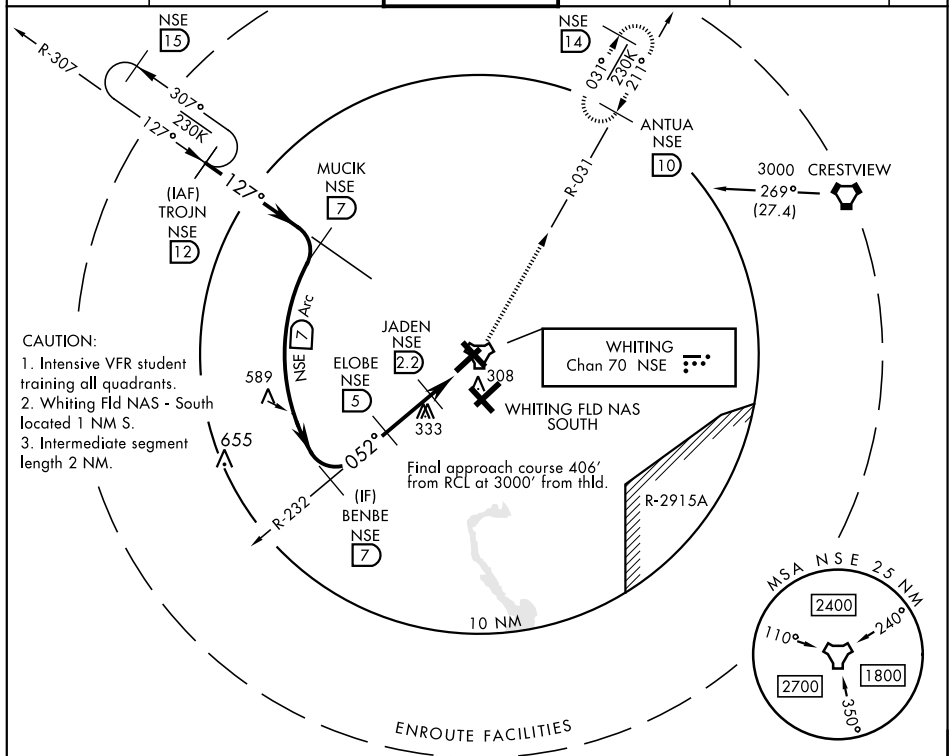


## TACAN RWY 5

TACAN NSE Chan <b>70</b>	APCH CRS <b>052°</b>	Rwy Idg <b>6003</b> TDZE <b>180</b> Arpt Elev <b>199</b>	AL-602 [USN]      WHITING FLD NAS - NORTH (KNSE)				
<div><div></div><div>* Circling not authorized in sector SE of Rwy 5-23 and SW of Rwy 14-32.</div></div>			<div>MISSED APPROACH: Climb to 3000 via R-232 to NSE TACAN. Then via NSE TACAN R-031 to ANTUA and hold. Continue climb in hold. Contact Pensacola APP CON.</div>				
ATIS ★ <b>290.325</b>	PENSACOLA APP CON <b>127.35 278.8</b>		NORTH WHITING TOWER ★ <b>121.4 306.925</b>		GND CON <b>251.15</b>	CLNC DEL <b>257.775</b>	ASR



EMERG SAFE ALT 100 NM 3500

CATEGORY	A	B	C	D
S-5	600-1 401 (400-1)	520-1 461 (500-1)	340 461 (500-1½)	760-2 561 (600-2)

**C CIRCLING\***

052° to TACAN

219

HIRL all Rwy