
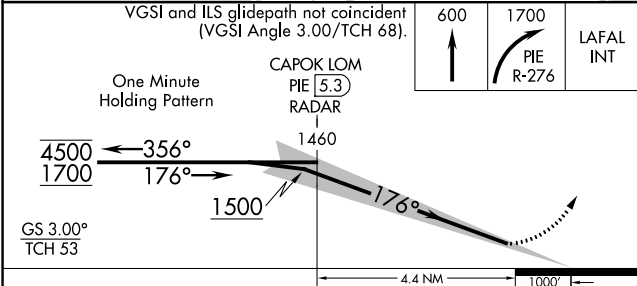
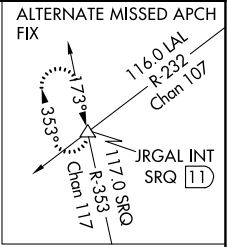
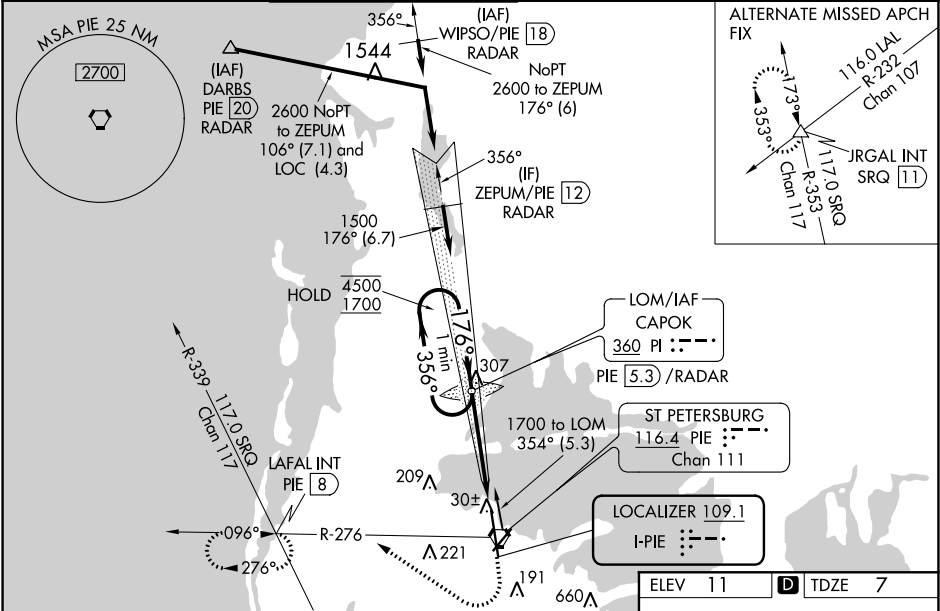


LOC I-PIE 109.1	APP CRS 176°	Rwy Idg TDZE Apt Elev 9180 7 11
---------------------------	------------------------	---

ILS RWY 18 (SA CAT I & II)
ST PETE-CLEARWATER INTL (PIE)

DME, RADAR, or ADF required.			MALSR 	MISSED APPROACH: Climb to 600 then climbing right turn to 1700 on PIE VORTAC R-276 to LAFAL INT/PIE 8 DME and hold.
SA CAT I: Requires specific OPSPEC, MSPEC, or LOA approval and use of HUD to DH. SA CAT II: Reduced lighting requires specific OPSPEC, MSPEC, or LOA approval and use of autoland or HUD to touchdown. SA CAT I & II S-ILS 18 NA when control tower closed.				

ATIS 134.5	TAMPA APP CON 125.3 316.05	ST. PETERSBURG TOWER★ 118.3 (CTAF) 0 257.8	GND CON 121.9 348.6	CLNC DEL 120.6 350.2	UNICOM 122.95
----------------------	--------------------------------------	---	-------------------------------	--------------------------------	-------------------------



CATEGORY	A	B	C	D
S-ILS 18	SA CAT I RA 157/14	150 DA 157		
S-ILS 18	SA CAT II RA 107/12	100 DA 107		

SA CATEGORY I & II ILS - SPECIAL AIRCREW & AIRCRAFT CERTIFICATION REQUIRED

TDZ/CL Rwy 18 0

HIRL Rwy 18-36 0

MIRL Rwy 4-22 0

REIL Rwy 4 and 22

SE-3, 03 DEC 2020 to 31 DEC 2020

SE-3, 03 DEC 2020 to 31 DEC 2020