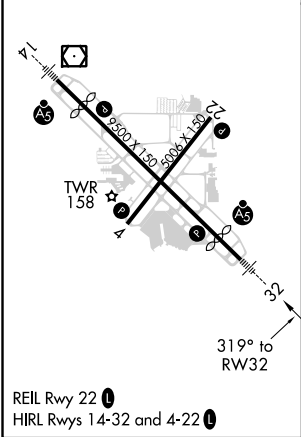
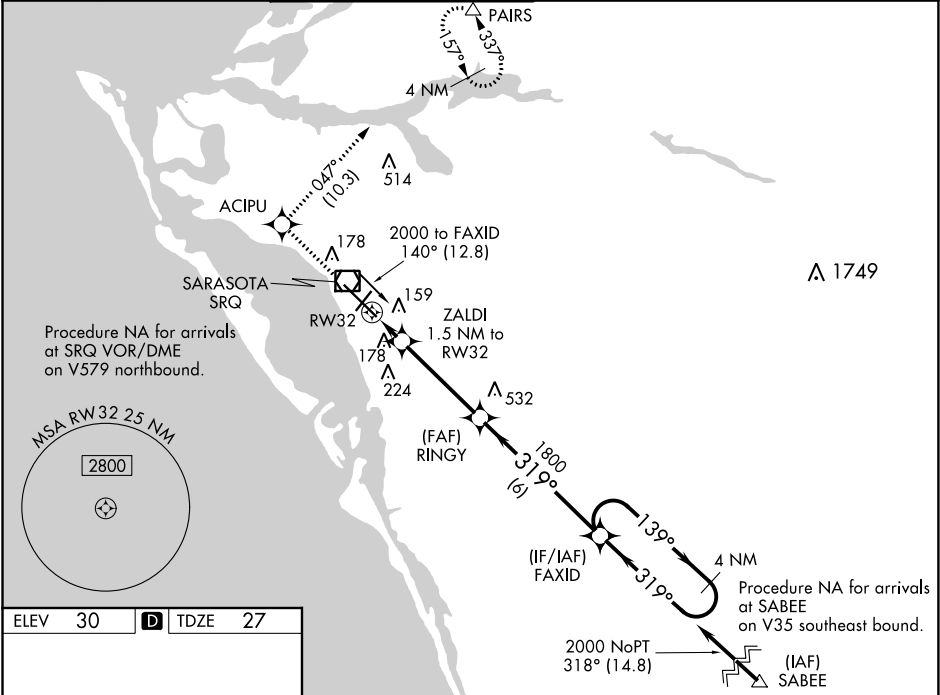


WAAS CH <b>72605</b> <b>W32A</b>	APP CRS <b>319°</b>	Rwy Idg <b>7510</b> TDZE <b>27</b> Apt Elev <b>30</b>
--	------------------------	---

**RNAV (GPS) RWY 32**  
SARASOTA/BRADENTON INTL (SRQ)

RNP APCH.			<div>MALSR</div> <div><div><div>A5</div><div>1000</div></div></div>	MISSED APPROACH: Climb to 3000 direct ACIPU and on track 047° to PAIRS and hold, continue climb-in-hold to 3000.		
▼ For uncompensated Baro-VNAV systems, LNAV/VNAV NA below -15°C or above 43°C. When control tower closed, LPV and LNAV/VNAV NA; increase LNAV all Cats visibility to 1 mile. When control tower closed, inop table does not apply to LNAV Cats A and B. When control tower closed, for inop MALSR, increase LNAV Cat C and D visibility to 1½ mile.						
ATIS 124.375	TAMPA APP CON 119.65 353.575	SARASOTA TOWER ★ 120.1(CTAF) 256.8	GND CON 121.9 273.6	CLNC DEL 118.25	UNICOM 122.95	



3000	ACIPU	tr 047°	PAIRS	FAXID	4 NM Holding Pattern
*LNAV only.					
RW32 1.5 NM to ZALDI 1.5 NM to RINGY 1800 319° 1800 319° 139° 2000 GP 3.00° TCH 53					
1.5 NM 3.9 NM 6 NM					
CATEGORY	A	B	C	D	
LPV DA	227-½ 200 (200-½)				
LNAV/ VNAV DA	463-1 436 (500-1)				
LNAV MDA	440-½	413 (500-½)	440-¾	413 (500-¾)	
CIRCLING	500-1	470 (500-1)	500-1½ 470 (500-1½)	580-2 550 (600-2)	