

RNAV (GPS) RWY 18

| | | |
|-------------------------|------------------------------|---|
| APCH CRS 183° | Rwy Idg THRE Arpt Elev | 8025 189 195 |
|-------------------------|------------------------------|---|

AL-699 [USAF]

DUKE FLD (EGLIN AF AUX NR3) (KEGI)

DME/DME RNP-0.3 NA



MISSED APPROACH: Climb straight ahead to 3000 direct WUTAR and hold.

ATIS ★
244.575

| | |
|---------------|---------------|
| EGLIN APP CON | |
| 281.45 | (271° - 089°) |
| 360.6 | (090° - 270°) |

DUKE TOWER ★
133.2 290.425

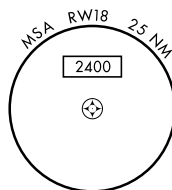
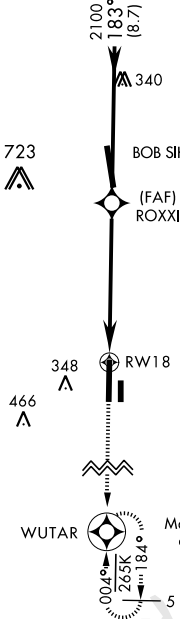
GND CON
123,25 251,125

Prodecure not useable at times
due to restricted area activity.

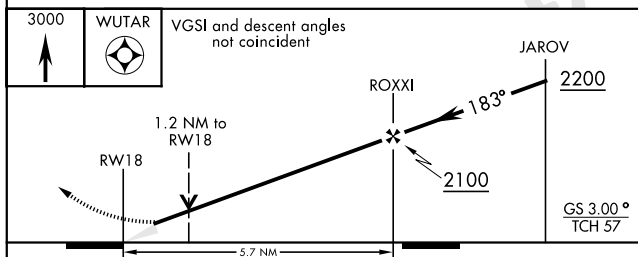


For uncompensated Baro-VNAV systems,
LNAV/VNAV NA below -15°C (5°F).

CAUTION:
BOB SIKES Arpt
at 6 NM final



EMERG SAFE ALT 100 NM 3600



| CATEGORY | A | B | C | D | E |
|------------------|--------|-------------|------------------------|----------------------|------------------------|
| LNNAV/VNAV DA | 560/37 | | 371 | (400-¾) | |
| LNNAV MDA | 640/24 | 451 (500-½) | 640/45 | 451 (500-¾) | |
| CIRCLING | 700-1 | 505 (600-1) | 700-1½ 505 (600-1½) | 820-2 625 (700-2) | 840-2¼ 645 (700-2¼) |

The diagram illustrates the layout of the HIRL Rwy 18-36. At the top, a box indicates 'ELEV 195' and 'THRE 189'. Below this, a vertical line represents the runway, with '183° to RW18' and '81' labeled. To the right of the runway, there are two circles labeled 'A1' and 'P'. To the left, there is a 'TWR' (tower) and a star symbol. Below the tower, there is a '356' and a '282' with a triangle symbol. The runway is labeled '8025 x 150'. To the right of the runway, there is an 'ASSAULT STRIP' and a '180°' label. Below the assault strip, there is a '3500 x 60' and a '360°' label. At the bottom of the runway, there is a circle labeled '36'. The entire diagram is labeled 'HIRL Rwy 18-36' at the bottom.