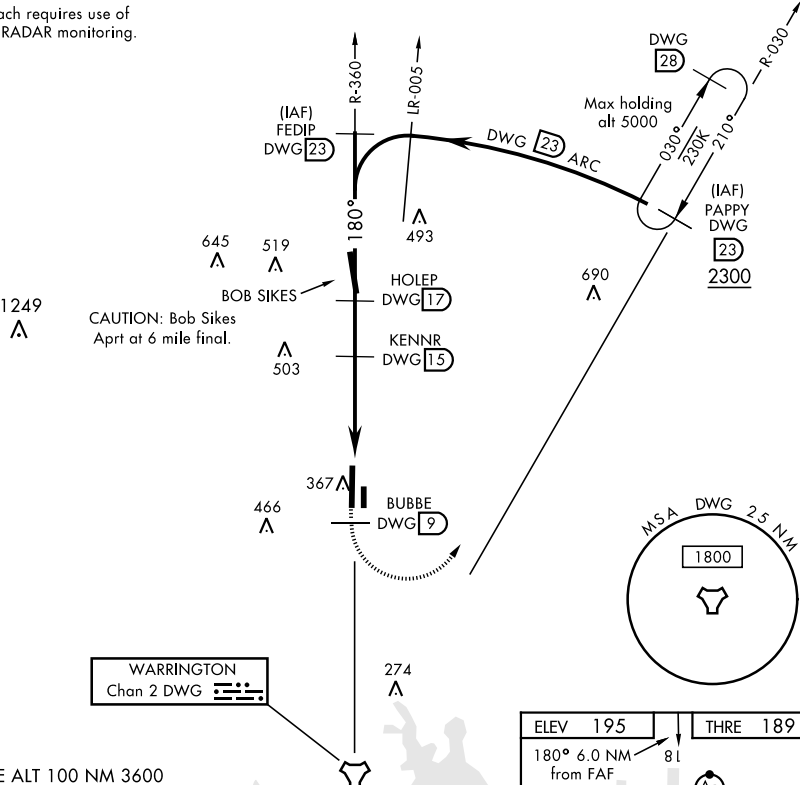


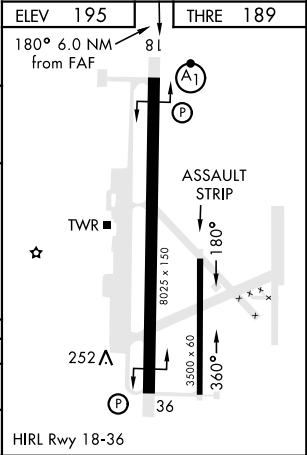
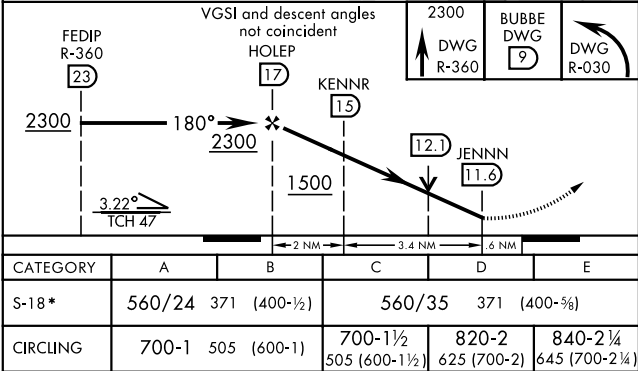
TACAN RWY 18

TACAN DWG Chan 2	APCH CRS 180°	Rwy Idg 8025 THRE 189 Arprt Elev 195	AL-699 [USAF]	DUKE FLD (EGLIN AF AUX NR3) (KEGI)
* When ALS inop, increase CAT AB RVR to 55, vis to 1 mile, CAT CDE vis to 1½ miles.			ALSF-1 A1	MISSED APPROACH: Climb on DWG R-360 to 9 DME (BUBBE), then climbing left turn to 2300 direct DWG R-030/23 DME (PAPPY) and hold.
ATIS ★ 244.575	EGLIN APP CON 125.1 281.45 (271° - 089°) 132.1 360.6 (090° - 270°)	DUKE TOWER ★ 133.2 290.425	GND CON 123.25 251.125	

Missed Approach requires use of RNAV or ATC RADAR monitoring.



EMERG SAFE ALT 100 NM 3600



TACAN RWY 18

SE-3, 03 DEC 2020 to 31 DEC 2020

SE-3, 03 DEC 2020 to 31 DEC 2020