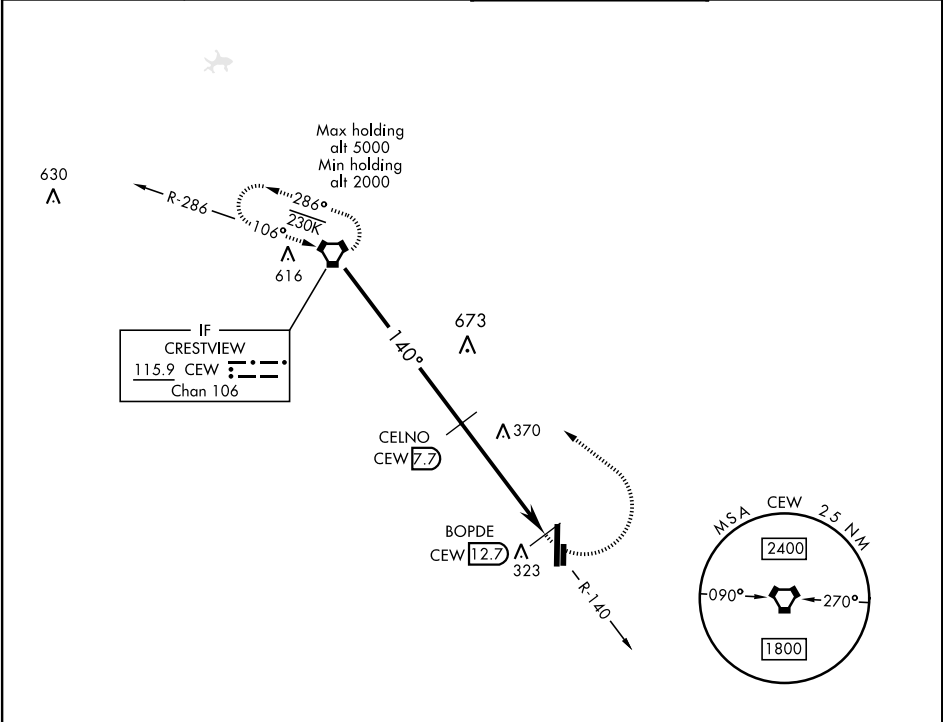


VORTAC CEW 115.9 Chan 106	APCH CRS 140°	Rwy Idg THRE Arpt Elev NA NA 195	AL-699 [USAF]	DUKE FLD (EGLIN AF AUX NR3)	(KEGI)
---	-------------------------	--	---------------	-----------------------------	--------

MISSED APPROACH: Climbing left turn to 2000 direct CEW VORTAC and hold.

ATIS ★ 244.575	EGLIN APP CON 125.1 281.45 (271°- 089°) 132.1 360.6 (090°- 270°)	DUKE TOWER ★ 133.2 290.425	GND CON 123.25 251.125
--------------------------	--	--------------------------------------	----------------------------------

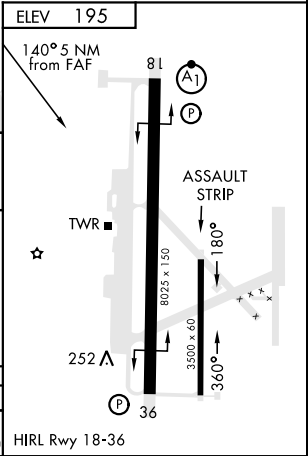
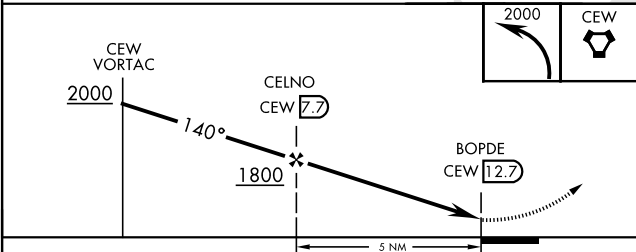


SE-3, 03 DEC 2020 to 31 DEC 2020

SE-3, 03 DEC 2020 to 31 DEC 2020

DME REQUIRED

EMERG SAFE ALT 100 NM 3500



CATEGORY	A	B	C	D	E
CIRCLING	680-1	485 (500-1)	680-1½ 485 (500-1½)	820-2 625 (700-2)	820-2¼ 625 (700-2¼)