

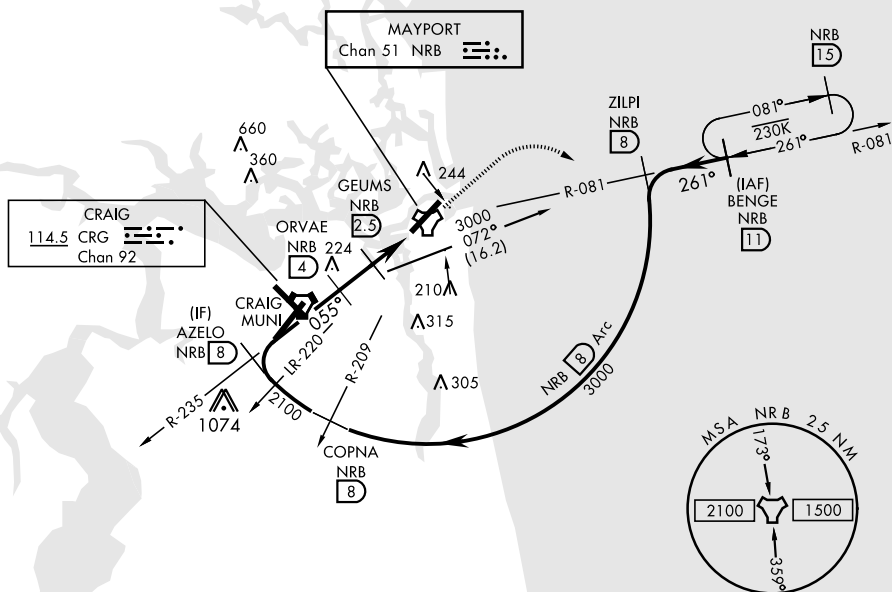
TACAN RWY 5

TACAN Chan 51	NRB 055°	APCH CRS 055°	Rwy Idg TDZE Arpt Elev	8001 12 15	AL-722 [USN] MAYPORT NS (ADM DAVID L. MC DONALD FLD) (KNRB)
<p>▼ • Circling not authorized to Rwy 23 at night when VGSi inop on Rwy 23, unless the station has an approved observer watching for marine traffic in the St. John's River channel.</p>			<p>MISSED APPROACH: Climb to 500. Then climbing right turn to 3000 via RNR TACAN R-081 to BENGEE and hold, continue climb in hold to 3000.</p>		

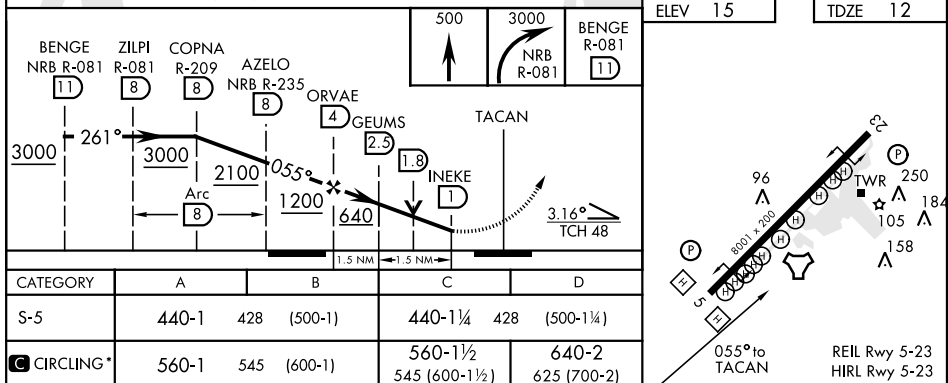
ATIS ★ 236.775	JACKSONVILLE APP CON 124.9 308.4	MAYPORT TOWER ★ 118.75 239.3	GND CON 126.5 233.7	ASR/PAR
-------------------	-------------------------------------	---------------------------------	------------------------	---------

CAUTION: Intmed seq len 4 NM.

CRG feeder requires turn in hold.



EMERG SAFE ALT 100 NM 2800



MAYPORT, FLORIDA

30°23'N-81° 25'W MAYPORT NS (ADM DAVID L. MC DONALD FLD) (KNRB)

Amdt 3 19JUL18

TACAN RWY 5

SE-3, 03 DEC 2020 to 31 DEC 2020

SE-3, 03 DEC 2020 to 31 DEC 2020