

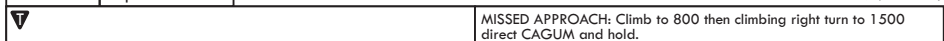
PENSACOLA, FLORIDA

RNAV (GPS) RWY 1

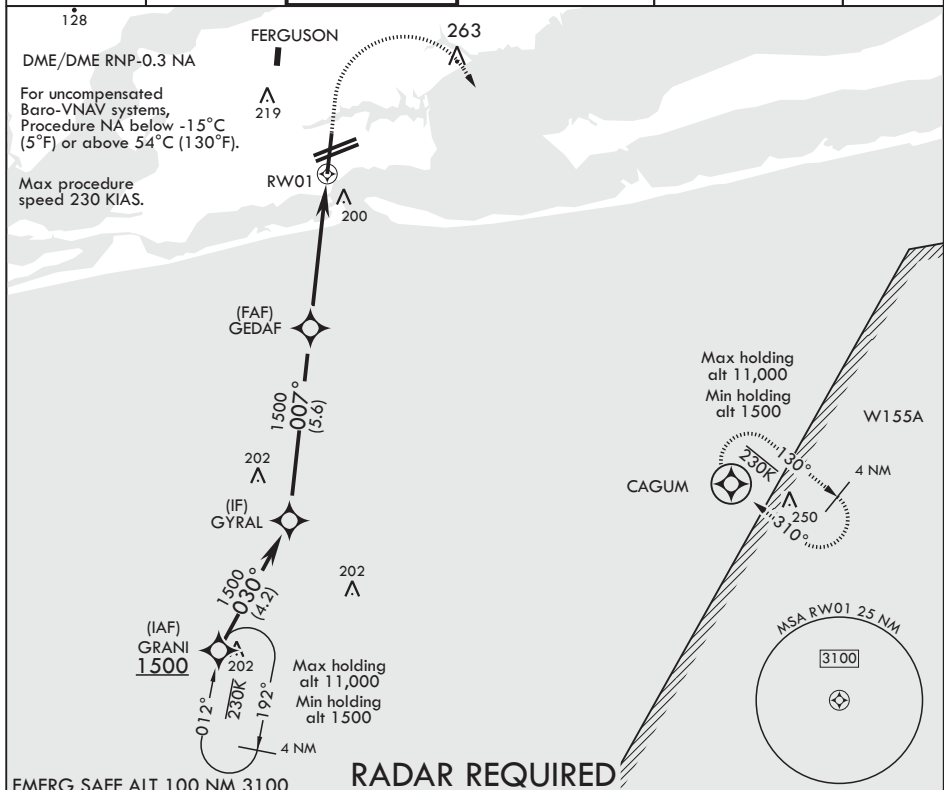
AL-736 (USN)

PENSACOLA NAS (FORREST SHERMAN FLD) (KNPA)

APCH CRS 007°	Rwy Idg	7136
	TDZE	28
	Arpt Elev	28

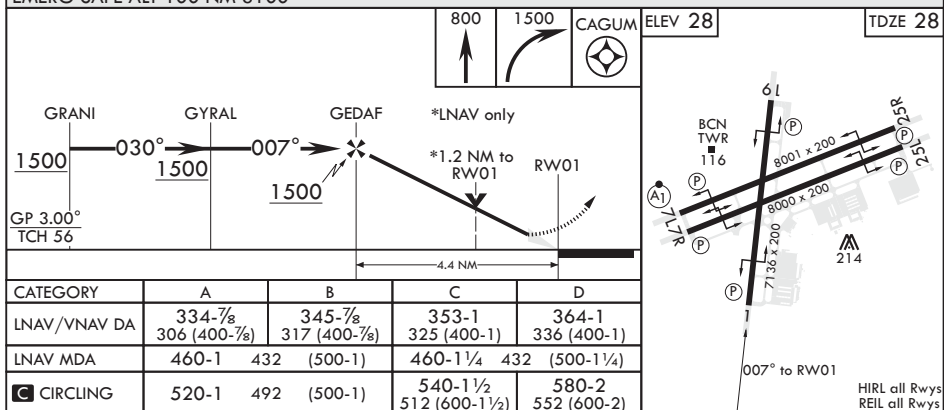


ATIS 124.35 266.8	APP CON 120.65 270.8	SHERMAN TOWER 120.7 340.2	SHERMAN GND CON 121.7 336.4	SHERMAN CLNC DEL 134.1 268.7	ASR/PAR
----------------------	-------------------------	------------------------------	--------------------------------	---------------------------------	---------



EMERG SAFE ALT 100 NM 3100

RADAR REQUIRED



PENSACOLA, FLORIDA

30°21'N - 87°19'W PENSACOLA NAS (FORREST SHERMAN FLD) (KNPA)

Amdt 3 02JAN20

RNAV (GPS) RWY 1

SE-3, 03 DEC 2020 to 31 DEC 2020

SE-3, 03 DEC 2020 to 31 DEC 2020