

PENSACOLA, FLORIDA

RNAV (GPS) RWY 19

APCH CRS	Rwy Idg	7136
187°	TDZE	22
	Arpt Elev	28

AL-736 (USN)

PENSACOLA NAS (FORREST SHERMAN FLD) (KNPA)

ATIS 124.35 266.8		APP CON 120.65 270.8	SHERMAN TOWER 120.7 340.2	SHERMAN GND CON 121.7 336.4	SHERMAN CLNC DEL 134.1 268.7	ASR/PAR
----------------------	--	-------------------------	------------------------------	--------------------------------	---------------------------------	---------

MISSED APPROACH: Climb to 800 then climbing right turn to 1500 direct FCTRY and hold.

DME/DME RNP-0.3 NA

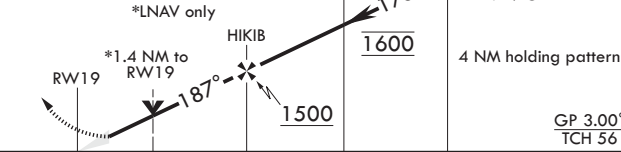
For uncompensated
Baro-VNAV systems,
Procedure NA below -15°C
(5°F) or above 54°C (130°F).

MISSED APPROACH

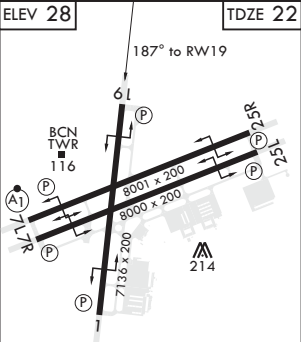


RADAR REQUIRED

EMERG SAFE ALT 100 NM 3100



CATEGORY	A	B	C	D	E
LNAV/VNAV DA	469-1 3/8	447	(500-1 3/8)		
LNAV MDA	520-1 498 (500-1)	520-1 3/8 498	(500-1 3/8)		
CIRCLING	520-1 492 (500-1)	540-1 1/2 512 (600-1 1/2)	580-2 552 (600-2)		



PENSACOLA, FLORIDA

30°21'N - 87°19'W PENSACOLA NAS (FORREST SHERMAN FLD) (KNPA)

Amtr 4 02JAN20

RNAV (GPS) RWY 19

SE-3, 03 DEC 2020 to 31 DEC 2020

SE-3, 03 DEC 2020 to 31 DEC 2020