

PENSACOLA, FLORIDA

RNAV (GPS) RWY 25L

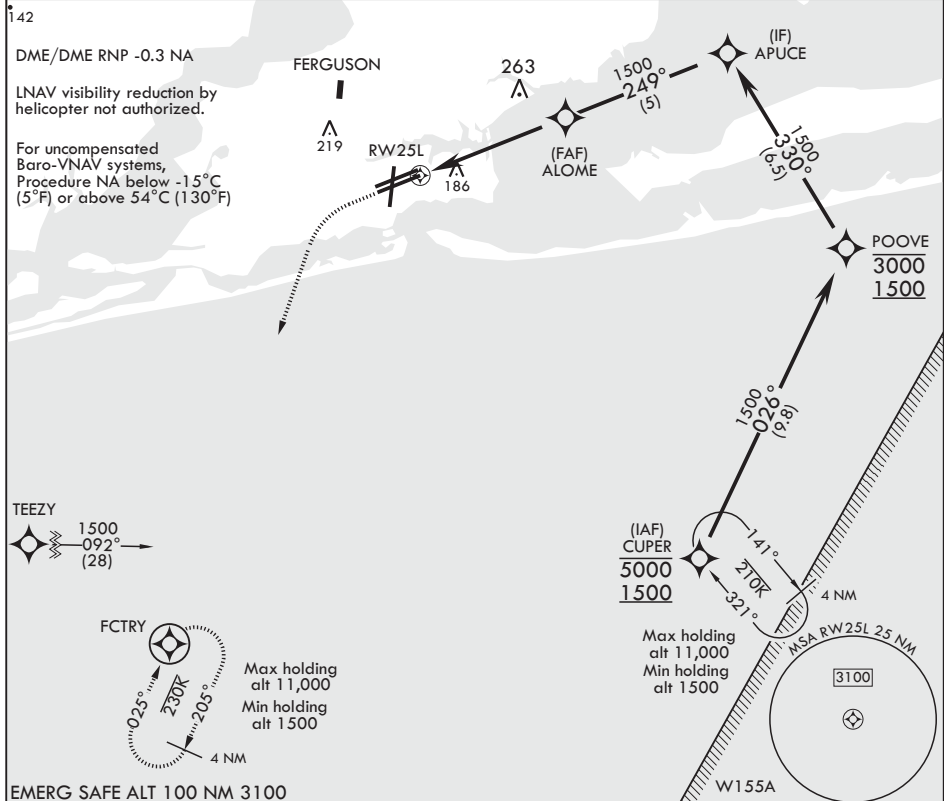
AL-736 (USN)

PENSACOLA NAS (FORREST SHERMAN FLD) (KNPA)

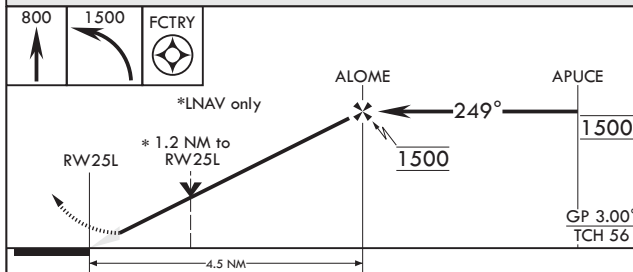
APCH CRS 249°	Rwy Idg 8000
	TDZE 22
	Arpt Elev 28

T	MISSED APPROACH: Climb to 800 then climbing left turn to 1500 direct FCTRY and hold.
---	--

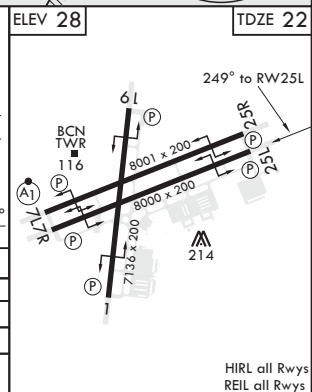
ATIS 124.35 266.8	APP CON 120.65 270.8	SHERMAN TOWER 120.7 340.2	SHERMAN GND CON 121.7 336.4	SHERMAN CLNC DEL 134.1 268.7	ASR/PAR
----------------------	-------------------------	------------------------------	--------------------------------	---------------------------------	---------



EMERG SAFE ALT 100 NM 3100



CATEGORY	A		B		C		D	
LNAV/VNAV DA	440-1½		418		(500-1½)			
LNAV MDA	440-1	418	(500-1)		440-1½	418	(500-1½)	
C CIRCLING	520-1	492	(500-1)		540-1½ 512 (600-1½)	580-2 552 (600-2)		



PENSACOLA, FLORIDA

30°21'N - 87°19'W PENSACOLA NAS (FORREST SHERMAN FLD) (KNPA)

Amdt 2 10OCT19

RNAV (GPS) RWY 25L

SE-3, 03 DEC 2020 to 31 DEC 2020