

PENSACOLA, FLORIDA

RNAV (GPS) RWY 25R

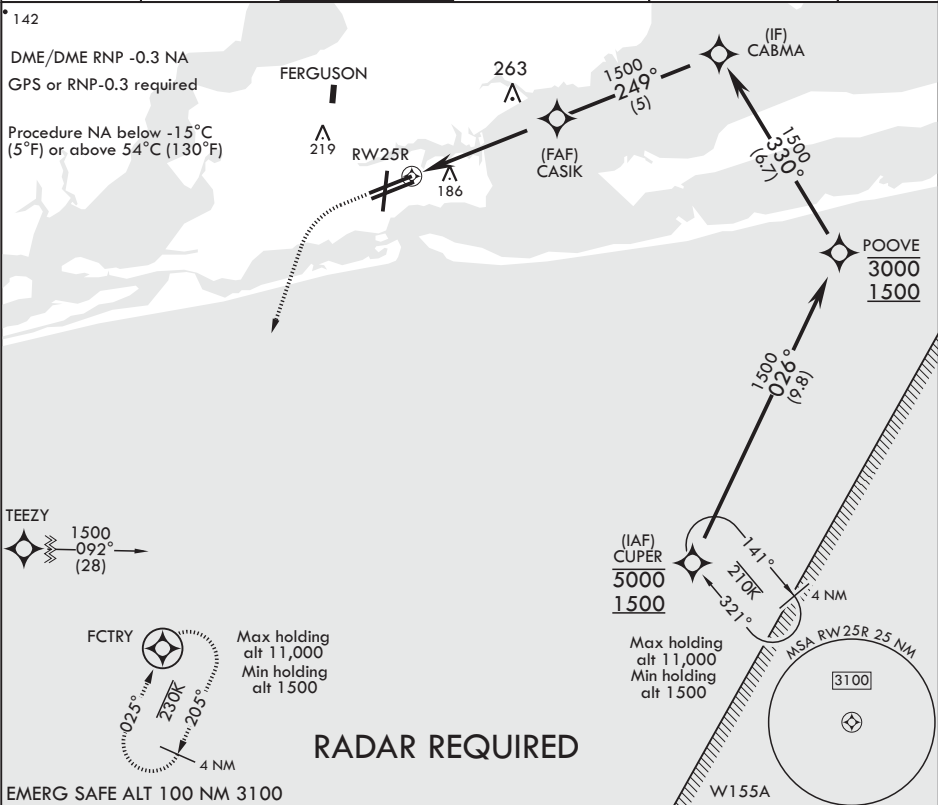
APCH CRS	Rwy Idg	8001
249°	TDZE	21
	Arprt Elev	28

AL-736 (USN)

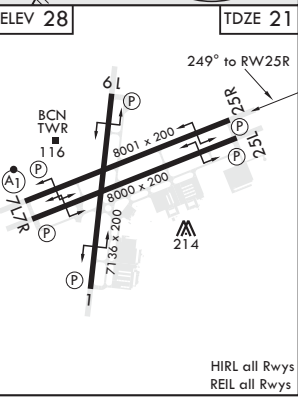
PENSACOLA NAS (FORREST SHERMAN FLD) (KNPA)

--	--	--	--

ATIS 124.35 266.8	APP CON 120.65 270.8	SHERMAN TOWER 120.7 340.2	SHERMAN GND CON 121.7 336.4	SHERMAN CLNC DEL 134.1 268.7	ASR/PAR
----------------------	-------------------------	------------------------------	--------------------------------	---------------------------------	---------



		Not coincident with PAR GS		ELEV 28		TDZE 21	
*LNAV only		CASIK		CABMA		1500	
RW25R		*1.2 NM to RW25R		249°		1500	
4.5 NM		GP 3.00° TCH 56					
CATEGORY	A	B	C	D			
LNAV/VNAV DA	440-1 1/8	419	440-1 1/8	419	(500-1 1/8)		
LNAV MDA	440-1	419	440-1 1/8	419	(500-1 1/8)		
CIRCLING	520-1	492	540-1 1/2 512 (600-1 1/2)	580-2 552 (600-2)			



PENSACOLA, FLORIDA

30°21'N - 87°19'W PENSACOLA NAS (FORREST SHERMAN FLD) (KNPA)

Amdt 6 10OCT19

RNAV (GPS) RWY 25R

SE-3, 03 DEC 2020 to 31 DEC 2020

SE-3, 03 DEC 2020 to 31 DEC 2020