
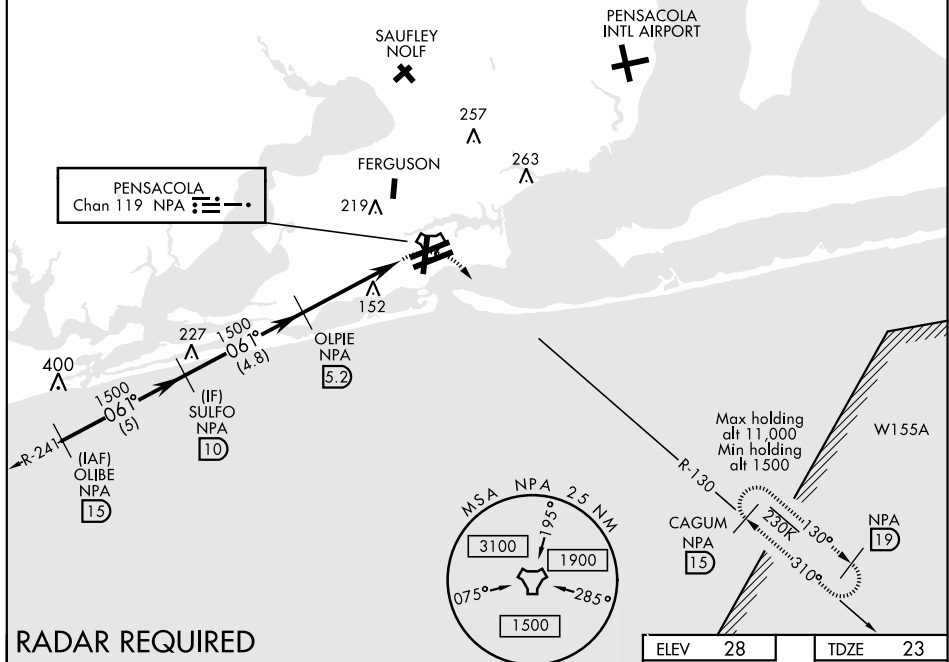


TACAN RWY 7L

TACAN NPA Chan 119	APCH CRS 061°	Rwy Idg 8001 TDZE Arpt Elev 23 28	AL-736 [USN]			TACAN RWT 7L
PENSACOLA NAS (FORREST SHERMAN FLD) (KNPA)						
▼ * When ALS inop, increase CAT AB vis to 1 mile, CAT CDE vis to 1½ miles.			ALSF-1 		† MISSED APPROACH: Climbing right turn to 1500 via NPA TACAN R-130 to CAGUM and hold.	
ATIS 124.35 266.8		PENSACOLA APP CON 120.65 270.8		SHERMAN TOWER 120.7 340.2		GND CON 121.7 336.4
				CLNC DEL 134.1 268.7		ASR/ PAR

CAUTION: The length of the intermediate segment (4.76 NM) is less than the minimum (6 NM).

† Missed Approach requires use of RNAV or ATC RADAR monitoring.



RADAR REQUIRED

EMERG SAFE ALT 100 NM 3100

