

TACAN RWY 7R

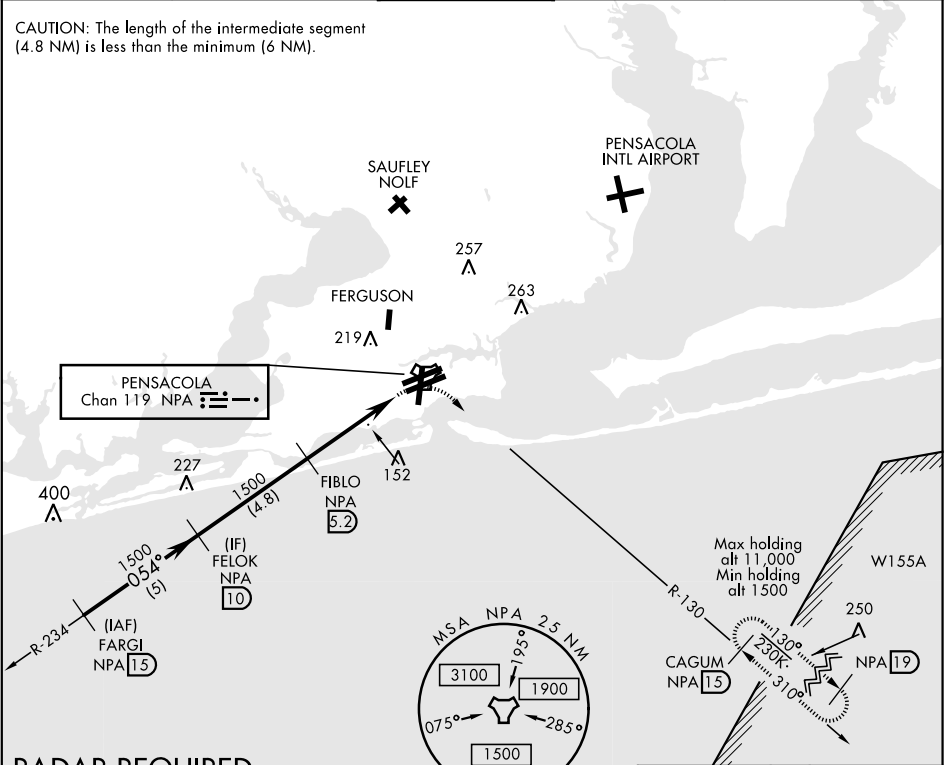
TACAN NPA Chan 119	APCH CRS 054°	Rwy ldg TDZE 25 Arprt Elev 28
-----------------------	------------------	-------------------------------------

AL-736 [USN]

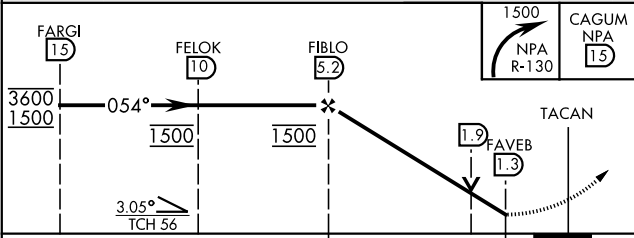
PENSACOLA NAS (FORREST SHERMAN FLD) (KNPA)

T		MISSED APPROACH: Climbing right turn to 1500 via NPA TACAN R-130 to CAGUM and hold.		
ATIS 124.35 266.8	PENSACOLA APP CON 120.65 270.8	SHERMAN TOWER 120.7 340.2	GND CON 121.7 336.4	CLNC DEL 134.1 268.7
ASR/ PAR				

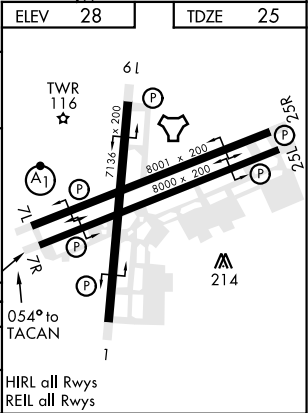
CAUTION: The length of the intermediate segment (4.8 NM) is less than the minimum (6 NM).



RADAR REQUIRED
EMERG SAFE ALT 100 NM 3100



CATEGORY	A	B	C	D	E
S-7R	440-1	415 (500-1)	440-1½	415 (500-1½)	
CIRCLING	520-1	492 (500-1)	540-1½ 512 (600-1½)	580-2	552 (600-2)



TACAN RWY 7R

SE-3, 03 DEC 2020 to 31 DEC 2020

SE-3, 03 DEC 2020 to 31 DEC 2020