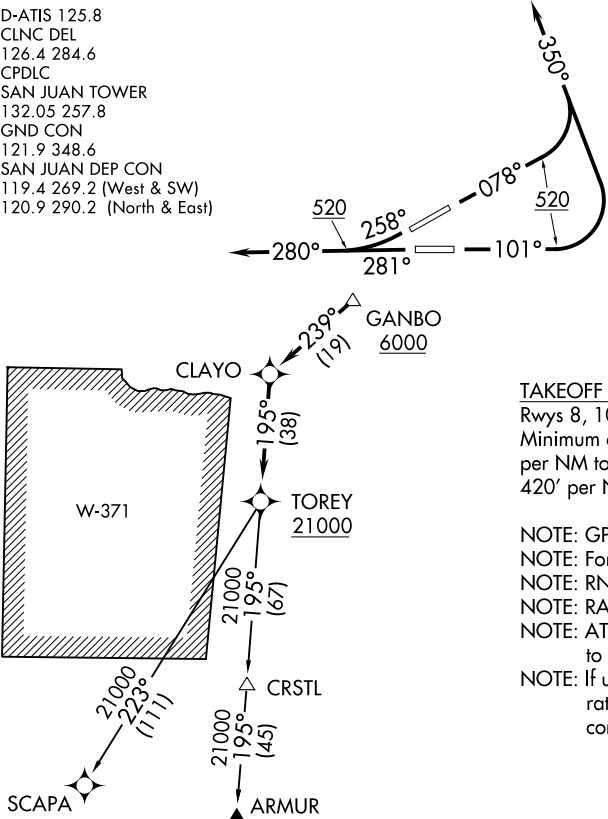


D-ATIS 125.8  
CLNC DEL  
126.4 284.6  
CPDLC  
SAN JUAN TOWER  
132.05 257.8  
GND CON  
121.9 348.6  
SAN JUAN DEP CON  
119.4 269.2 (West & SW)  
120.9 290.2 (North & East)



**TAKEOFF MINIMUMS**  
Rwys 8, 10, 26, 28: Standard.  
Minimum obstacle climb of 390' per NM to 4900. ATC climb of 420' per NM to 6000.

NOTE: GPS Required.  
NOTE: For Turbojet aircraft only.  
NOTE: RNAV 1.  
NOTE: RADAR required.  
NOTE: ATC climb of 264' per NM to 21000.  
NOTE: If unable to accept climb rates, advise ATC on initial contact.

NOTE: Chart not to scale.

DEPARTURE ROUTE DESCRIPTION

**TAKEOFF RUNWAY 8:** Climb heading 078° to 520, then climbing left turn heading 350° or as assigned by ATC, expect vectors to GANBO, then via depicted route to TOREY. Thence. . . .

**TAKEOFF RUNWAY 10:** Climb heading 101° to 520, then climbing left turn heading 350° or as assigned by ATC, expect vectors to GANBO, then via depicted route to TOREY. Thence. . . .

**TAKEOFF RUNWAY 26:** Climb heading 258° to 520, continue climb heading 280° or as assigned by ATC, expect vectors to GANBO, then via depicted route to TOREY. Thence. . . .

**TAKEOFF RUNWAY 28:** Climb heading 281° to 520, continue climb heading 280° or as assigned by ATC, expect vectors to GANBO, then via depicted route to TOREY. Thence. . . .

. . . .via assigned transition. Maintain 5000 unless assigned lower altitude. Expect clearance to FL280, or requested altitude if lower, ten minutes after departure.

ARMUR TRANSITION (GANBO1.ARMUR):  
SCAPA TRANSITION (GANBO1.SCAPA):